

ROYAL AGRICULTURAL SOCIETY OF TASMANIA



THRA

8 MARCH 2022

DR DIANNE SNOWDEN AM



C. W. Frost del.

H. Ireland sc.

1. Church
2. Govt House
3. Barracks
4. Jail
5. Hospital
6. Custom House

HOBART TOWN.

17. Govt Store, &c.
18. Govt Water Mill
19. Luncheon Yard
20. Mulgrave Battery
21. Mount Nelson
22. Govt Stock Yard within the town

London Published 1847 by J. Smith & Co. 11, Pall Mall East



Ship Inn, corner of Elizabeth and Collins Streets, Hobart
by Thomas Bock (between 1825 and 1832)
Reproduced with permission of National Library of Australia

WE, the Underigned, Land and Stock Holders, taking into Consideration the daily encreasing Number of Persons occupying themselves in Agricultural Pursuits, and the great Amount of Capital invested therein, and feeling the Necessity of encouraging by every possible Means those Interests universally admitted to be the great Source of Colonial Prosperity, taking also into Consideration the numerous and alarming Depredations committed upon the Flocks and Herds depasturing in the Interior, and the very extensive Losses sustained in Consequence, request a Meeting of the Stock-holders and Gentlemen connected with the Agricultural Interests, at the Ship Inn, in Hobart Town, on the 1st of January next, at Twelve o'Clock precisely, for the Purpose of establishing a Society, upon the Principle of those existing in the Mother Country, for the Protection of Property, the Prosecution of Offenders, affording, as far as Funds will admit, Remuneration to Sufferers, establishing a Cattle Shew, giving Bounties to deserving Servants, and for the Protection and Encouragement of Agricultural Pursuits in general.

Edward Lord	John Kerr	R. Honnor
G. W. Gunning	W. A. Bethune	G. F. Read
A. F. Kemp	H. I. Emmett	H. Munro
C. Jeffreys	E. Abbott, jun.	D. W. Stalker
G. W. Evans	R. L. Murray	W. Walkinshaw
T. Ritchie	W. R. Fryett	H. Mason
A. Rawcroft	John Riealey	J. Robertson,

*Hobart Town Gazette and Van Diemen's
Land Advertiser 8 December 1821 p.1*



Edward Lord



James Gordon



Charles Rowcroft



AWH Humphrey

**Some of the
founders of the
VDL Agricultural
Society**



Anthony Fenn Kemp

Class 6

1. That a suit of clothes and one guinea be given to each of the 10 male servants in husbandry, and to each of the 10 female servants, prisoners of the Crown, being in the employ of Members of the Society, who shall have lived for the longest period beyond 3 years in their respective services and who shall have conducted themselves in the most exemplary manner.

2. To each of 5 shepherds who shall have taken care of a flock of sheep (not less than 300), in the best manner, for a period of not less than one year.

Class 7

- 1. That a suit of clothes and one guinea be given to the best sheep-shearer at the Annual Show.**
- 2. That two guineas be given to the ploughman who shall, in the shortest space of time, plough a certain quantity of land, with a plough and a pair of bullocks, without a driver, in the most work-manlike manner.**

Hobart Town Gazette and Van Diemen's Land Advertiser
20 April 1822 p.1.



Webb's Hotel c1890

Reproduced with permission of W.L. Crowther Library, State Library of Tasmania

[Two Faces]

PUBLISHED UNDER THE AUSPICES OF THE

No. 4.—3 m. 1.

DECEMBER 1, 1967

Page 39.

International Exhibition

1990-1991

[illegible]

Winter Tromsø Station		Summer Boskalis Station		Difference of temperature between (°C)
Time temp.	Wind temp.	Time temp.	Wind temp.	
July	14.5	14.5	14.5	0
August	16.5	15.5	15.5	+1
September	15.5	14.5	14.5	+1
October	10.5	10.5	10.5	+0
November	5.5	5.5	5.5	+0
December	0.5	0.5	0.5	+0
January	0.5	1.5	1.5	-1
February	0.5	1.5	1.5	-1
March	5.5	5.5	5.5	+0
April	10.5	10.5	10.5	+0
May	15.5	15.5	15.5	+0
June	20.5	20.5	20.5	+0
Annual	12.5	12.5	12.5	+0
50-50	10-10	50-50	10-10	0-0

It will be seen from the above that the two hottest months, January and February, in Taiwan are somewhat colder than our July and August.

[illegible][illegible]

by plantations, gardens and orchards, the small villages and peacefully placed cultivated places, dotted and embellished by lagoons, clipped or braced, and through which are admirably constructed real roads across the island, are all objects which finally carry back the mind to similar scenes of rural beauty in England and Scotland.²⁴

[illegible]

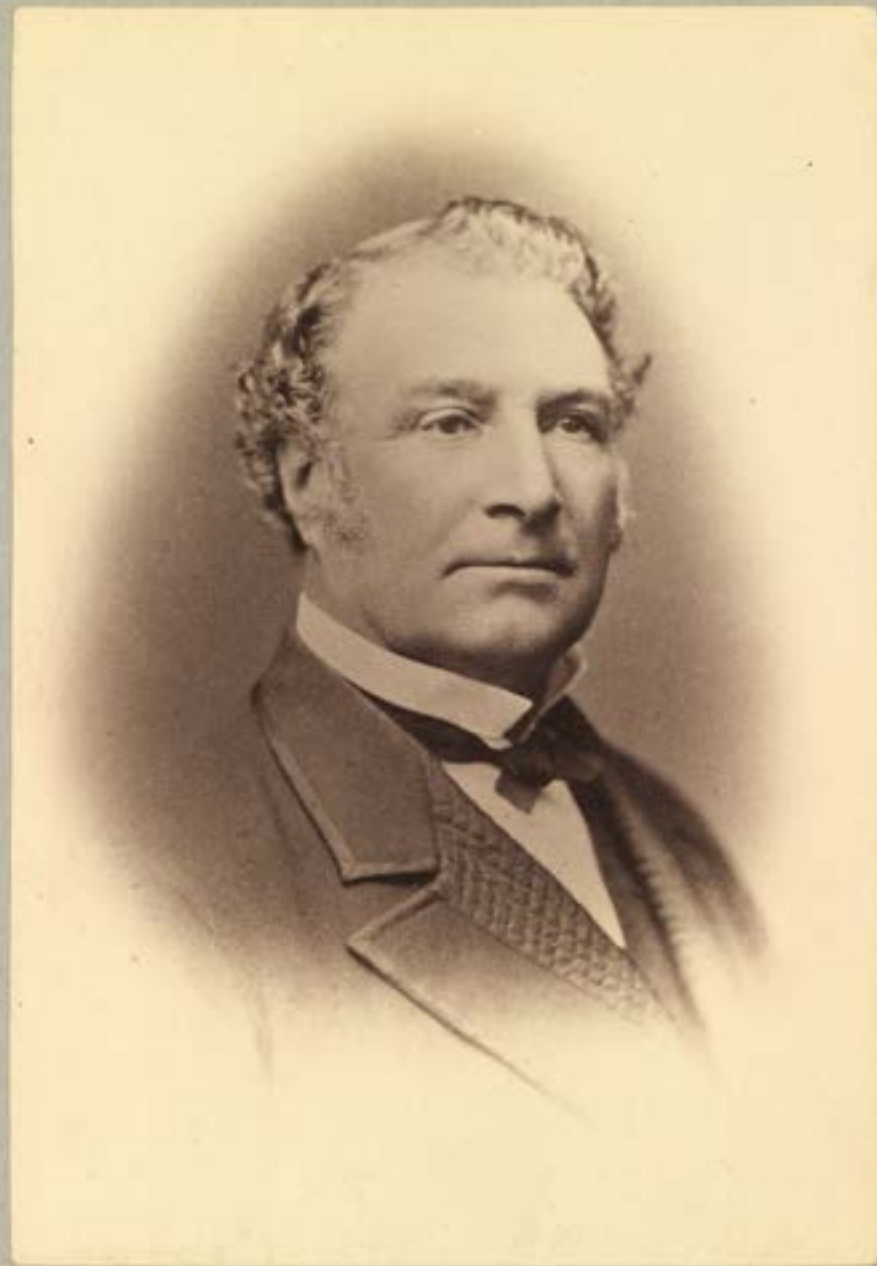
Mr. Dickinson adds, "In closing the list of these indigenous vegetable productions of Tasmania which can in any way be reckoned available for the sustenance of man, and one of them is of sufficient value to be worthy of the attention of the agriculturist or the horticulturist."

University at the Battle of Ensign was launched. Mr. Bartholomew, in a 4-hour lecture dated August 1932, continues telling us John W. Bushnell, a magnificent member of Hammond (Tennessee), "who, when he came to this assembly brought over a variety of fruit trees packed and stored in the bottom of the ship's hold. The fruit included Apples, Pears, Quince, Grapes, and a few other fruits. . . . Apples survived the voyage and have marked the growth of the vineyard. In the years when we find the following story on the 28th of August, 1934:—"We completed in assembling F. Goshen to plant some fruit trees, and to suggest others. He had brought the trees and sown upon his back more than 50 miles, to preserve them from injury." Owing to storms and the loss of a Warrent canoe, the transportation of new fruit to the vineyard was suspended, with what a sorrow of fruit deficiency.

In the above paper on the vegetable products exhibited by Tannania we are informed that there are now in that colony 120 varieties of fruit & garden herbs.

Tasmanian Farmers Magazine
No.4 Vol.1 1 December 1862

*Reproduced with permission
of the State Library of Tasmania*



Sir James Milne Wilson

Sir James Milne Wilson

J.W. Beattie

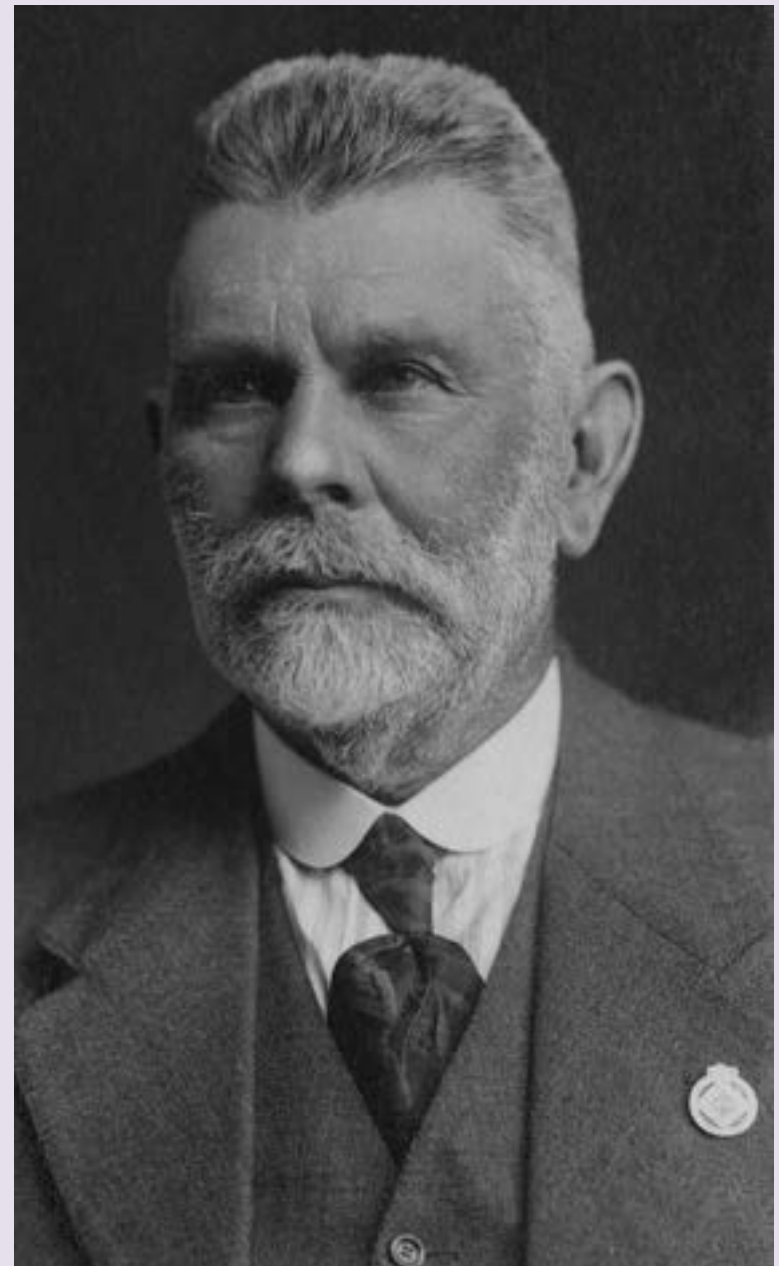
*Reproduced with permission of
Allport Library and Museum Fine
Arts, State Library of Tasmania*

**President, Tasmanian Agricultural,
Pastoral and Horticultural Society**



Hon. Charles Ellis Davies MLC

*Reproduced with permission of Tasmanian
Parliamentary Library*



Hon. Louis Manton Shoobridge MLC

Reproduced with permission of Tasmanian Parliamentary Library



New Town Showground 1884
RAST Collection



New Town Showground



New Town Showground c1900

TA, PH30/1/9102

Reproduced with permission of Tasmanian Archives



Warner & Co. Engineers Display, New Town Showground
TA, NS1013/1/1916 Reproduced with permission of Tasmanian Archives

Jan 24. 1923 Extraordinary Meeting Members.

A letter was read from the Honorable the
 Letters from Premier dated Nov. 24. 1922 advising that
 His Majesty the King had been graciously
 pleased to approve of the grant of the title
 "Royal" to this society.

The President, notified that the meeting
 that the meeting had been called to
 alter the name of the society and
 moved "That the name of the society
 be changed to "The Royal Agricultural
 Society of Tanganyika" the motion was
 seconded by Mr. Hanson, supported by
 Mr. L. Williquis and carried unanimously
 confirmed

8 Feb 1923

L. N. Phooindye
 President



**1927 Management Committee Leslie Murdoch back row 3rd from left
Mercury 20 October 1927 p.6. Mercury Historical Collection.
Reproduced with permission of Tasmanian Archives**

GRAND PARADE



Grand Parade 1963

TA, AA193/1/231 Mercury Historical Collection
Reproduced with permission of Tasmanian Archives



Grand Parade, early 1900s

TA, PH40/1/29 Reproduced with permission of Tasmanian Archives



***Tasmanian Mail* 23 October 1913 p.19**

Reproduced with permission of Tasmanian Archives



Grand parade 1920

TA, PH30/1/200 Reproduced with permission of Tasmanian Archives



Grand Parade 1930s
RAST Collection



Butcher's cart, H. Dunn, Elizabeth Street
RAST Collection



Grand Parade, no date, RAST Collection



**Australian Women's
Land Army
1940s
RAST Collection**

An attractive study of a member
of the A.W.L.A.



Mercury 22 October 1931 p.8

Mercury Historical Collection

Reproduced with permission of Tasmanian Archives



Cross-cut sawing contest 1935

TA, NS4023/1/79, Mercury Historical Collection

Reproduced with permission of Tasmanian Archives



Early Sideshow

NS392-1-396 *Reproduced with
permission of Tasmanian Archives*



Sideshow 1952

TA, AB713/1/1517 Mercury Historical Collection
Reproduced with permission of Tasmanian Archives



**Tasman 'Tas'
Bradley,
showman**



Merry-go-round 1952

TA, AB713/1/1530 Reproduced with permission of Tasmanian Archives









Royal Hobart Show. Dodgem cars, 1976
TA, NS3373/1/100 (Margaret Bryant Photographs)
Reproduced with permission of Tasmanian Archives



Image courtesy of ABC online



Children buying Cadbury sample bags

TA, AB713/1/1521

*Reproduced with permission of Tasmanian Archives
ith permission of Tasmanian Archives*



Showbags

TA, AB713/1/1527

Reproduced with permission of Tasmanian Archives

TRAVELLING TO THE SHOW



1951

Transport Department

ROYAL SHOW, HOBART

WEDNESDAY & THURSDAY, OCTOBER 24th & 25th

CHEAP FARES FROM ALL STATIONS

HOLIDAY EXCURSION TICKETS

GOOD FOR RETURN UNTIL TUESDAY, 30th OCTOBER

Holiday Excursion Tickets (usual minimum) to Hobart will be on sale at all Stations from Monday, 22nd October, to Thursday, 28th October.
On Wednesday, 24th October, Trains leave Melbourne 9.15 a.m., reach 4.30 a.m., immediately, and Perth 7.15 a.m. for Hobart. Return Trains leave Hobart for Melbourne 7.30 p.m., and for Perth 1.10 p.m. On Thursday, 25th October, Usual Services.
Trains leave Launceston for Hobart daily, 11.30 a.m. and 3.20 p.m., and Hobart for Launceston 9.30 a.m. and 3.0 p.m.
NOTE—Holiday Excursion Tickets are not available for break of journey, but passengers may visit journey at Glenorchy, New Town, and intermediate stopping Stations, and return from there if desired.

NOTICE TO EXHIBITORS

All Livestock and other Exhibits except Dogs and Poultry, arriving at Showground Park for all Shows on Monday and on Tuesday afternoon, will be taken direct to the Show Ground.

On Sunday, 21st October, a Special Train for Exhibits will leave Showground at 5.30 a.m., passing Launceston 9.5, Perth 1.10, Melbourne 4.10, Longford 1.15, and arriving at Hobart Junction 1.40. Special Stock Train which leaves Launceston at 9.30 a.m., passing Hobart Junction 12.10 p.m., Campbell Town 12.30 p.m., Ross 12.55 p.m., Perth 1.20, and arriving at Hobart Junction 1.40 p.m., and runs to Show Ground. Stock Special leaves St. Marys 1.40 a.m., passing Fingal 3.0 a.m., Jervis 3.20 a.m., and arriving at Hobart Junction with Stock Special due Showground Park 3.30 p.m.

On Monday, 22nd October, a Special Train for Exhibits will leave Launceston 9.30 a.m., and pick up Stock from St. Leonards, Gellie, and New Line Station, Ennabool to Camps Junction enroute, due Showground Park 3.10 p.m. Exhibits from Campbell Town to The Tree enroute, may board the Goods Train passing Longford Town 9.30 a.m. Show 1.5, Cambridge 2.30, Oak Plains 3.15, Perth 4.00, Longford 4.30 a.m., Launceston 12.30 p.m., due Showground Park 1.30 p.m. Stock Train also leaves Hobart Junction at 9.30 a.m. and will pick up Stock from Hobart Campbell Town to The Tree enroute, due Showground Park at 4.40 p.m.

Stock Special leaves Launceston 4.30 a.m., passing Melburn 5.10, Hay 5.40, Adelaide 6.30, Longford 7.5, and arriving at Hobart Junction with stock special due Showground Park 3.10 p.m.

On Thursday Night and Friday Morning Livestock Trains conveying selected Exhibits for Launceston and Western Line Stations will leave the Show Ground when loading completed, and departure times from Showground Park will be advised later.

There is an Enquiry Office at the Show Ground Platform.

General Manager's Office, Hobart, 26th October, 1951.

A. K. REID, General Manager of Railways.



Tasmanian Mail 23 October 1913 p.18



TA, AB713/1/1543
*Reproduced with
permission of
Tasmanian Archives*

PEOPLE AT THE SHOW



PEOPLE AT THE SHOW



1952

Above: AB713/1/1523

Right: AB713/1/1523

Reproduced with permission of
Tasmanian Archives





THE END