

The history of Scenic Tourism and Recreation on kunanyi/ Mount Wellington in the last 200 years

Anne McConnell

- for THRA, 11th May 2021



Mount Wellington Park Map, 1937, VW Hodgman
[Source – Tasmanian Archives & Heritage Office (TAHO)]

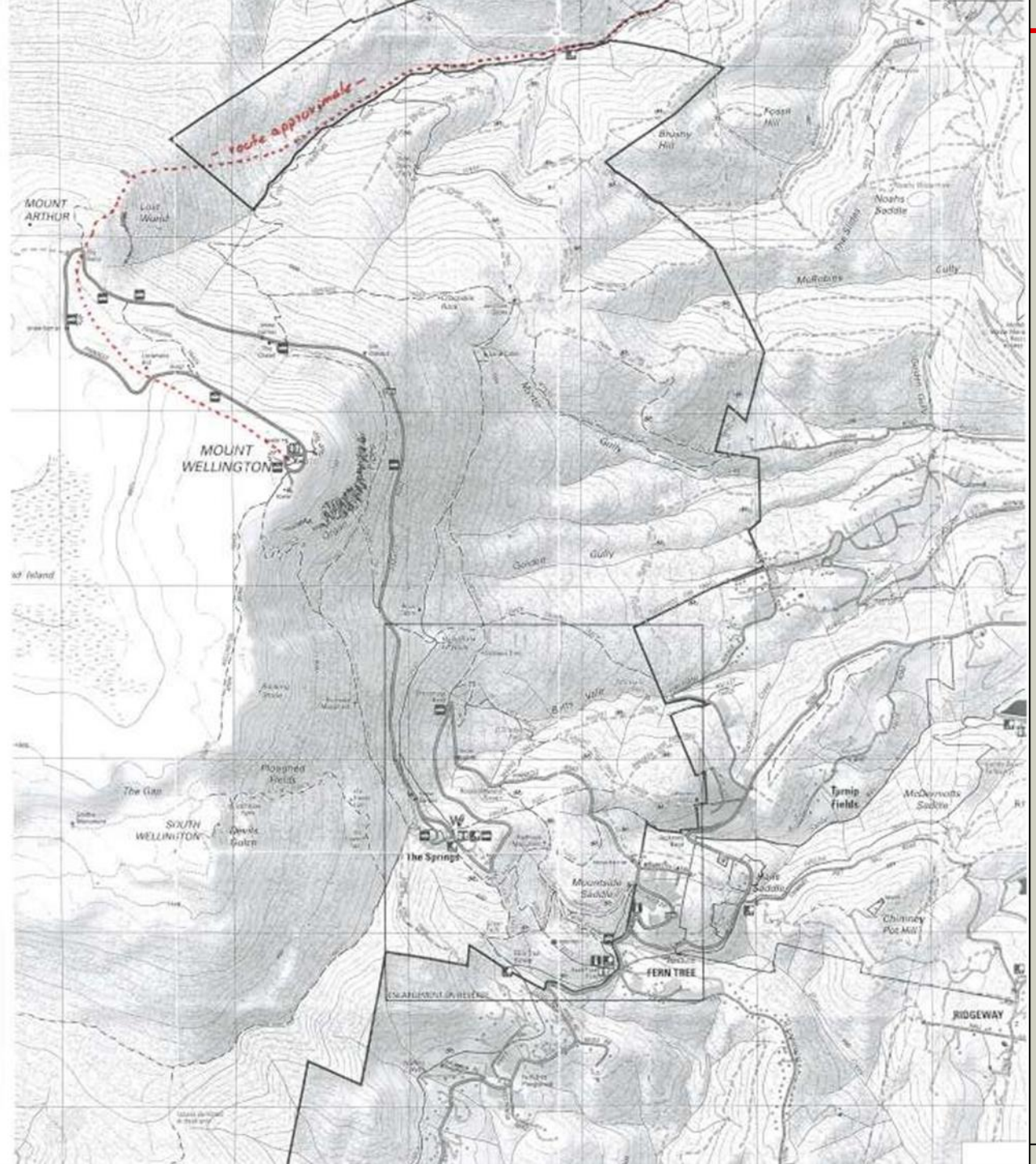


IDENTIFIED HISTORIC
HERITAGE PLACES IN
WELLINGTON PARK, 2005,
- Highlighting Recreational
And Scenic Tourism Heritage

[Source – Wellington Park Historic
Heritage Audit (McConnell & Scripps
2005)]

Place Type *	Hobart City Council	Glenorchy City Council	Parks & Wildlife Service	Outside ^A	Total	Percentage of Total
Natural Feature (of interest)	33	3	7	1	44	10.1%
Viewpoint (Lookout)	6	-	-	-	6	1.4%
Monument	6	-	-	-	6	1.4%
Park (& Reserve/Gardens)	4	-	2	-	6	1.4%
Other Plantings	2	3	-	-	5	1.1%
Modified Tree	1	-	-	1	2	0.5%
Clearing	1	-	1	1	3	0.7%
Farm	1	22	4	5	32	7.8%
Dwelling	3	1	1	3	8	1.8%
Hut (& Shelter)	83	8	6	5	102	23.4%
Campsite	6	1	2	-	9	2.1%
Other Accommodation	3	-	-	1	4	0.9%
Tea Houses	-	1	-	4	5	1.1%
Recreational (ice/snow)	5	-	-	-	5	1.1%
Track	76	4	9	3	92	21.1%
Road	2	1	-	-	3	0.7%
Bridge	2	-	-	-	2	0.5%
Timber Harvesting Area	1	-	6	1	8	1.8%
Sawmill	3	2	19	5	29	6.6%
Sawpit	2	-	-	-	2	0.5%
Logging Track	2	1	3	-	6	1.4%
Other Timber Industry	2	-	2	1	5	1.1%
Quarry	5	1	-	-	6	1.4%
Trapping	-	-	1	-	1	0.2%
Other Industry/Business	3	-	-	1	4	0.9%
Water Supply	7	7	2	1	17	3.9%
Electricity Supply	-	1	-	-	1	0.2%
Scientific Station	5	-	-	-	5	1.1%
Survey (trig point)	2	1	-	-	3	0.7%
Graves	1	1	-	-	2	0.5%
Convict	2	-	-	-	2	0.5%
Other ^B	1	2	1	2	6	1.4%
Unknown	1	3	-	-	5	1.1%

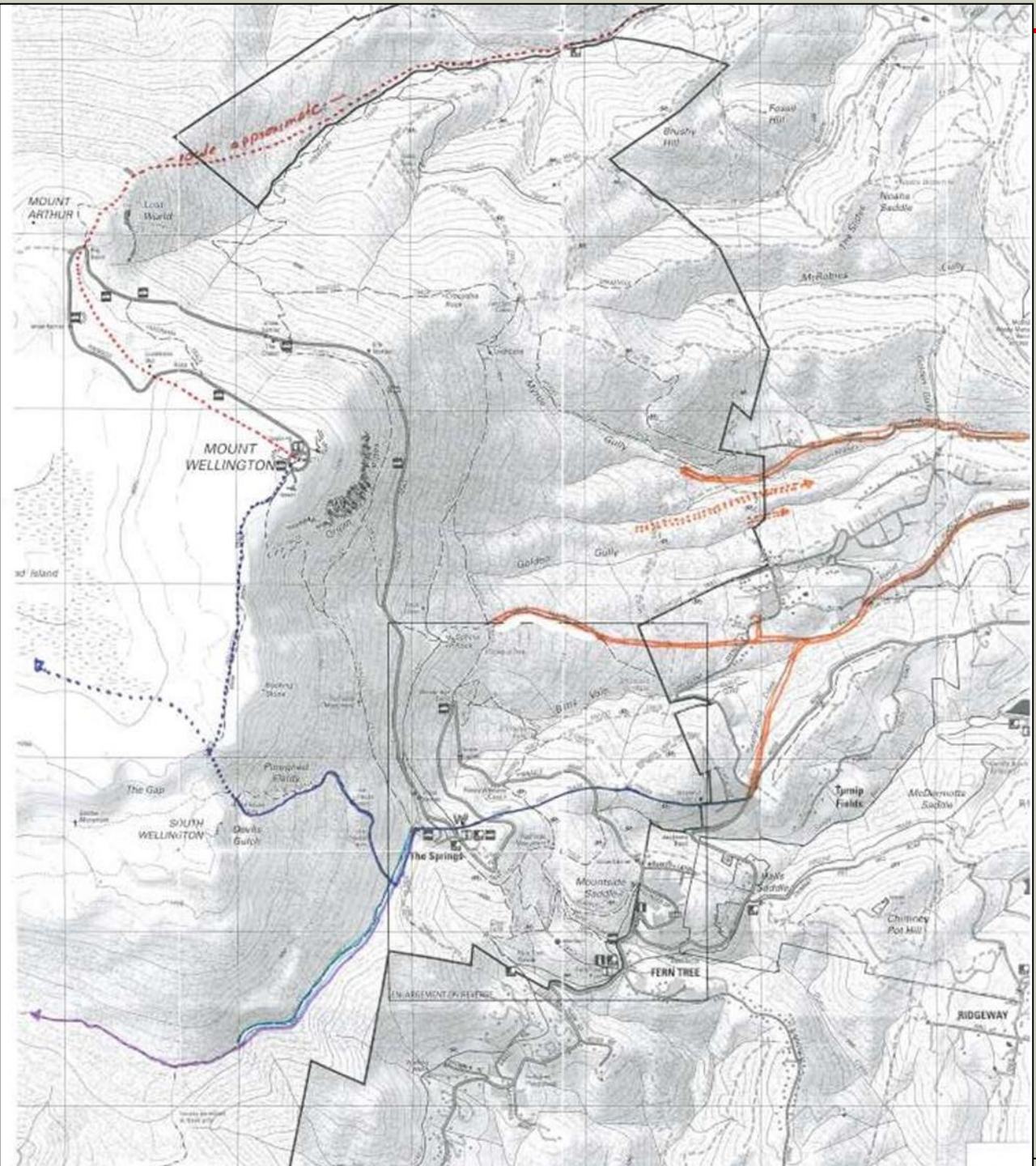
1804 - 1825





New Town Way Logging Road [Image: A. McConnell, 2010]

1825 - 1850





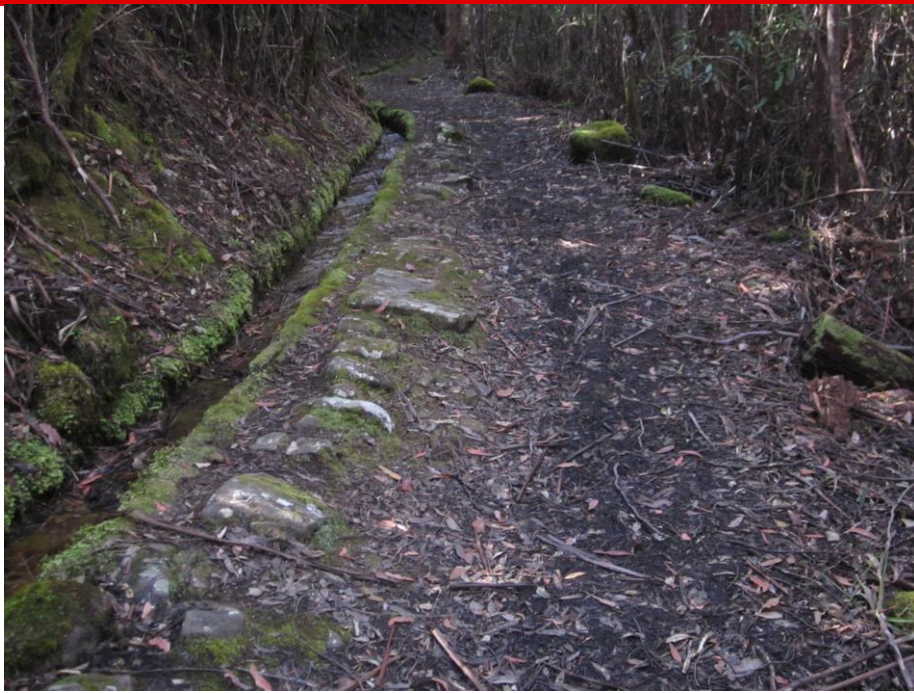
Possibly the Fingerpost Track, 1866-86, Robert Bruce,
[Source – National Library of Australia]

Summit Shelter – rebuilt 1928
from earlier hut (c.1849?)
[Image: A. McConnell, 2009]



The Pinnacle, 1870, author unknown.
[Source – WPMT, Cornish Collection]

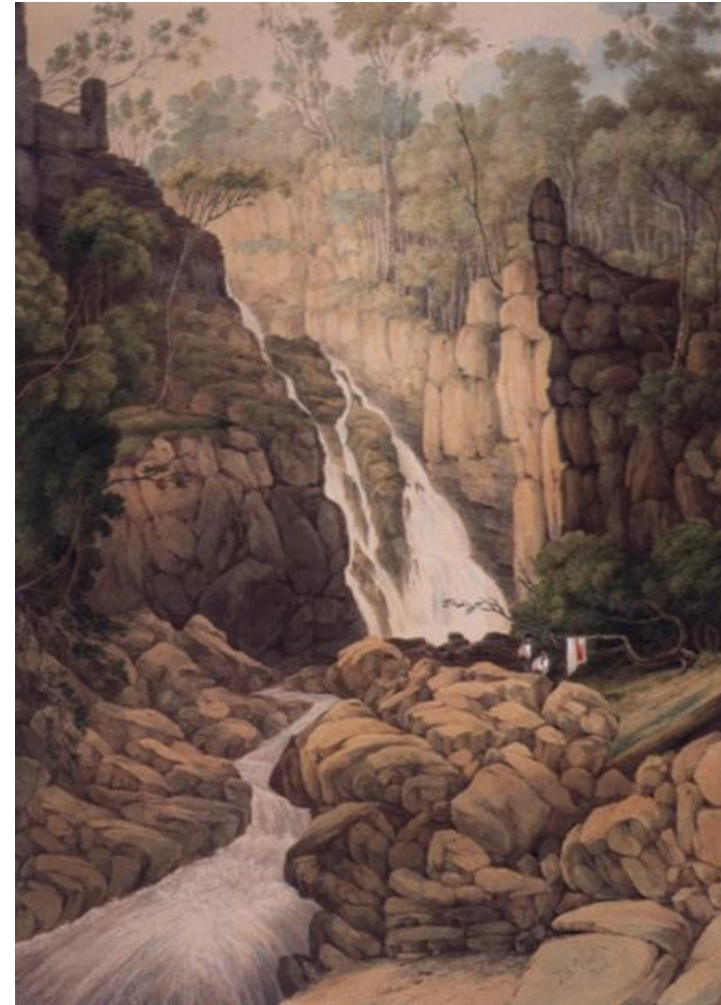




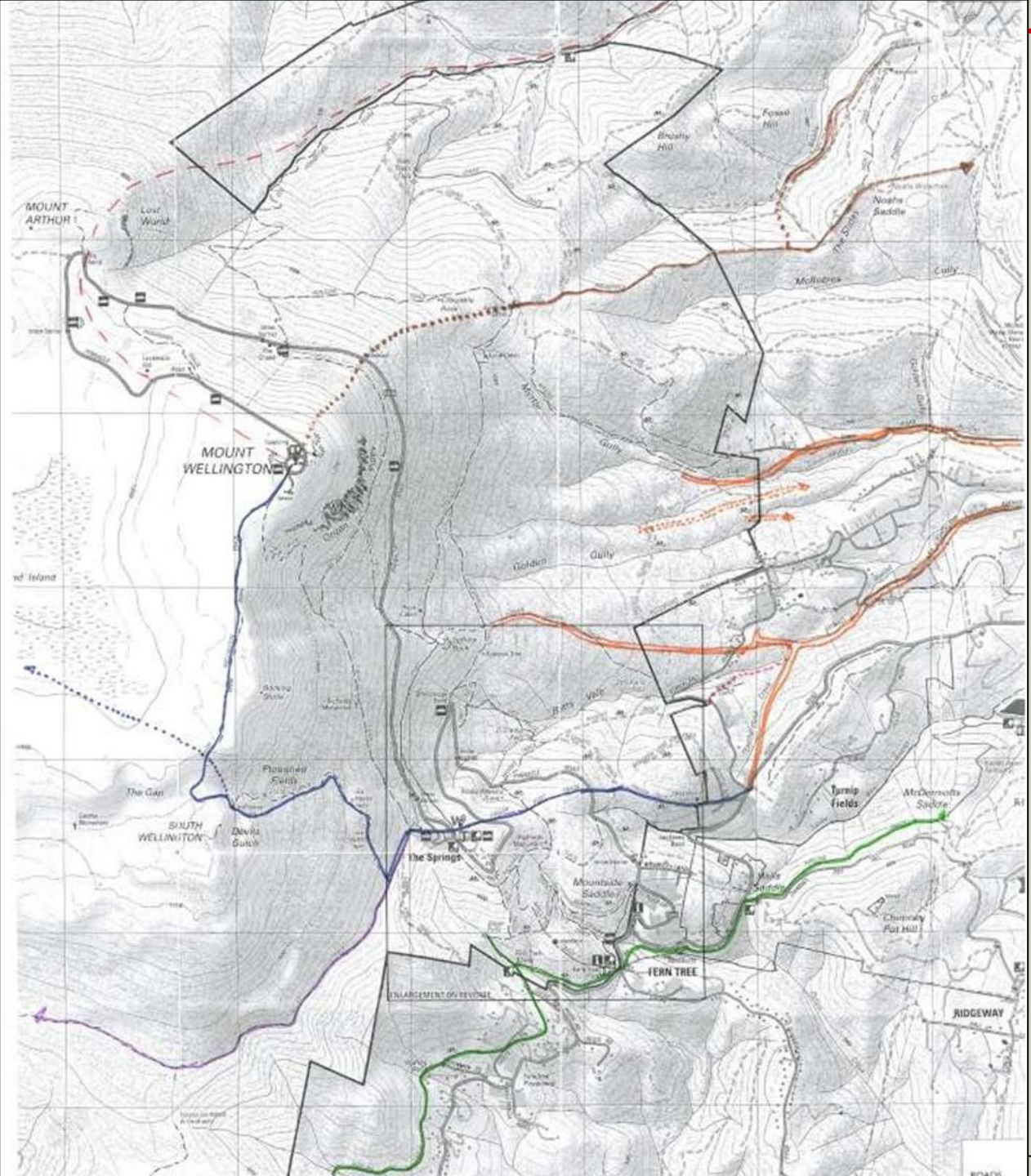
1831 Diversion (Milles Track) [Image: A. McConnell, 2015]

Wellington Falls Track [Image: A. McConnell, 2015]

Wellington Falls, 1846, John Skinner Prout.
[Source – Sheridan (2010, vol 1); original source - WL
Crowther Library, TAHO]



1850 - 1870





TRAILS TO PINNACLE & FALLS, MCDONELLISTOWN, 1910 EL. BEATTIE, HOBART.

Junction of the Wellington Falls Track (built 1845) and Icehouse Track (built 1849), no date, author unknown
 [Source – Sheridan 2010 (photo originally from the TMAG Collection)]



Junction of the Wellington Falls Track and Icehouse Track
 [Image: A. McConnell, 2011]

Rocking Stone. Clifford Album. ca. 1873.
[Source - W.L. Crowther Library, TAHO]



Woods Establishment, c.1875, author
unknown.
[source – TAHO]



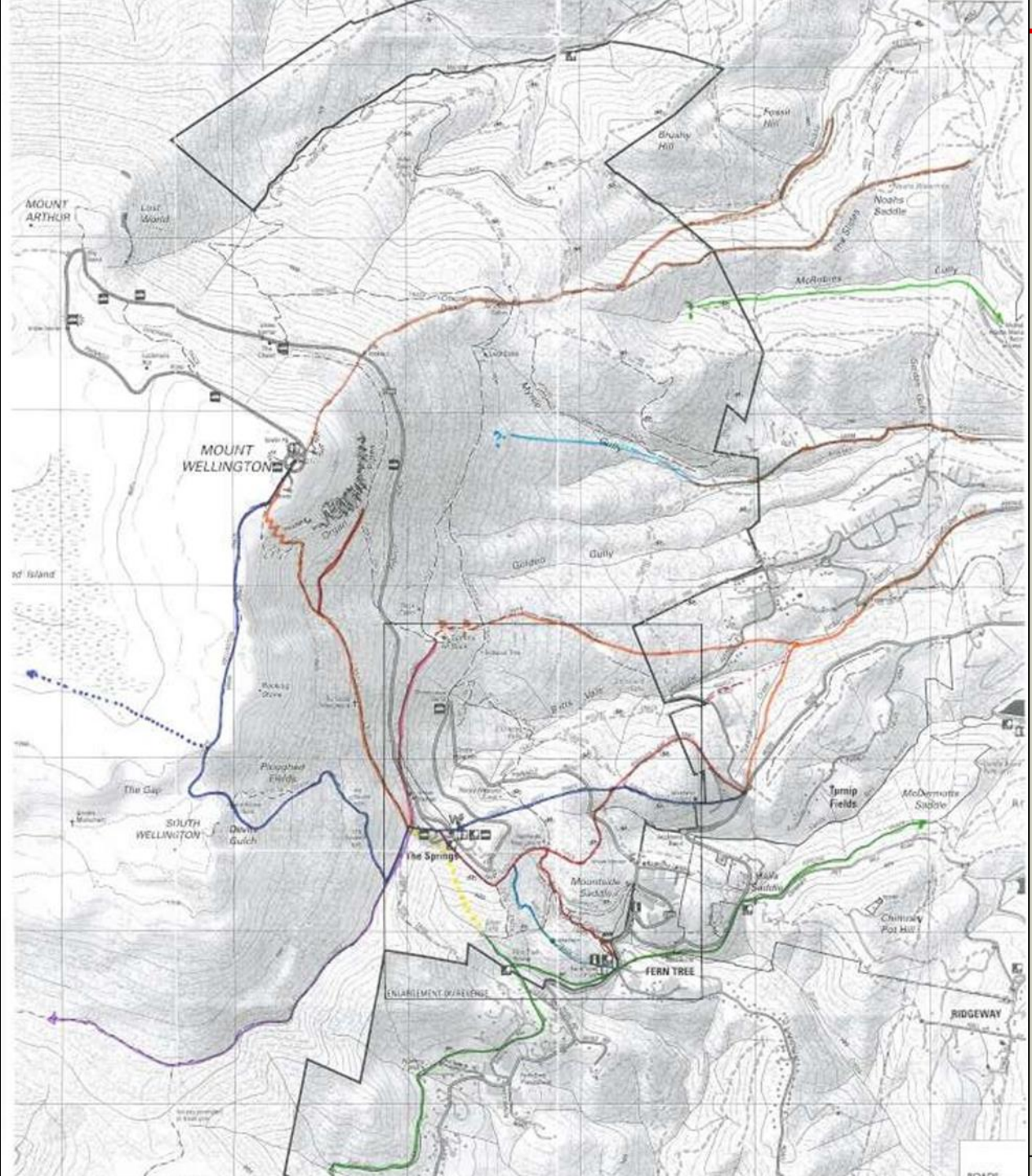
MWSS Pipeline Track between Fern Tree and the Bower, built 1861-62, image 1873, S. Clifford.

[Source – Evans 2014; original source – W.L. Crowther Library, TAHO]



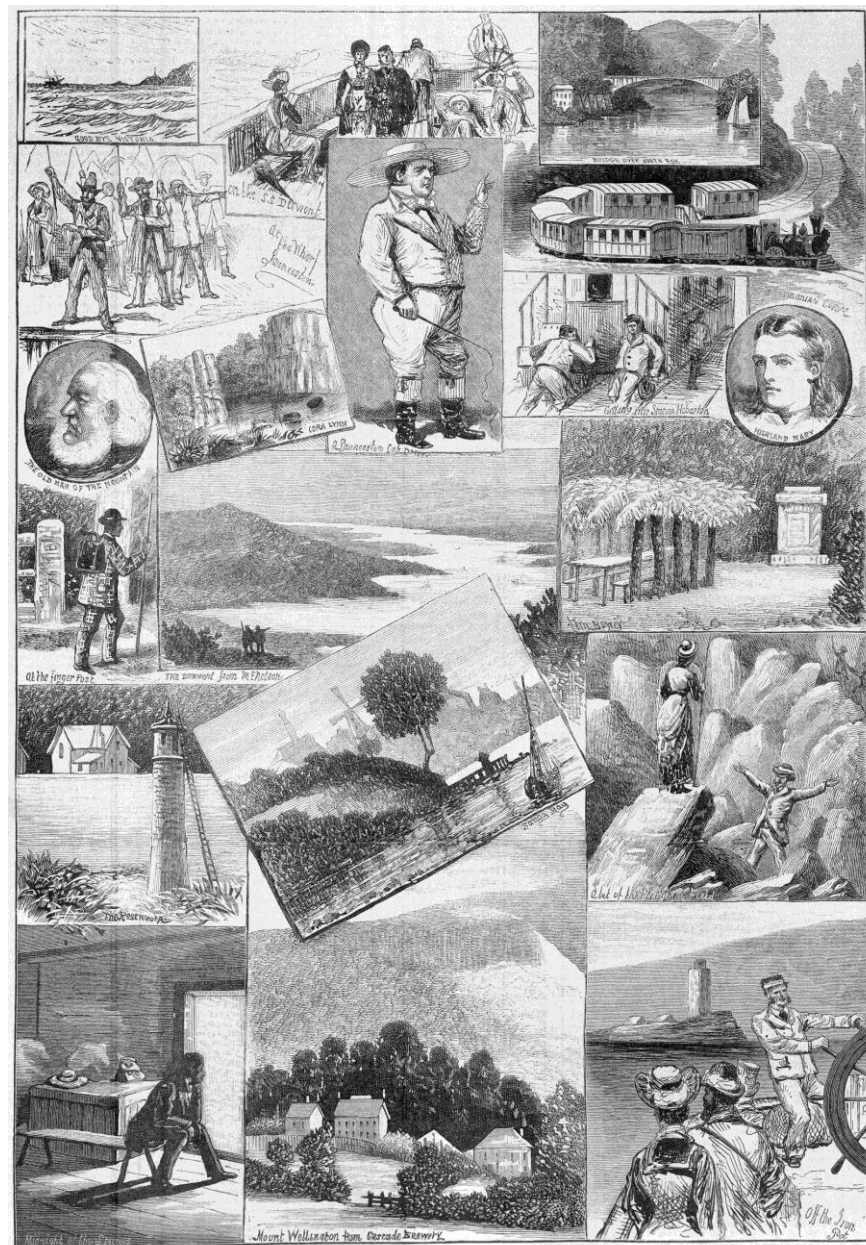
Fern Tree Bower, late 1890s, author unknown.
[Source – Evans 2014; original source - TAHO
PH30/1/8797]

1870 - 1906





Holiday Rambles in Tasmania – Ascending Mt Wellington, 1885.
[Source – State Library of Victoria]



Alfred May and Alfred Martin Ebsworth, 1879.
[Source – State Library of Victoria; provided by M Grist]



Waratah Hut, built c.1880.

[Image source unknown, part of WPMT site data.]



Clematis Hut, built by 1896, image author unknown, no date.

[Source – postcard M&J Grist Collection]

Radfords Track, built 1890, image by J.W. Beattie, c.1909.

[Source – E.W. Earle Collection, National Library of Australia]



Pinnacle (& Zig Zag) Track, built 1902-3, image by M.C. Horden, no date.

[Source - source unknown, part of the WPMT collection (possibly provided by M&J Grist)]

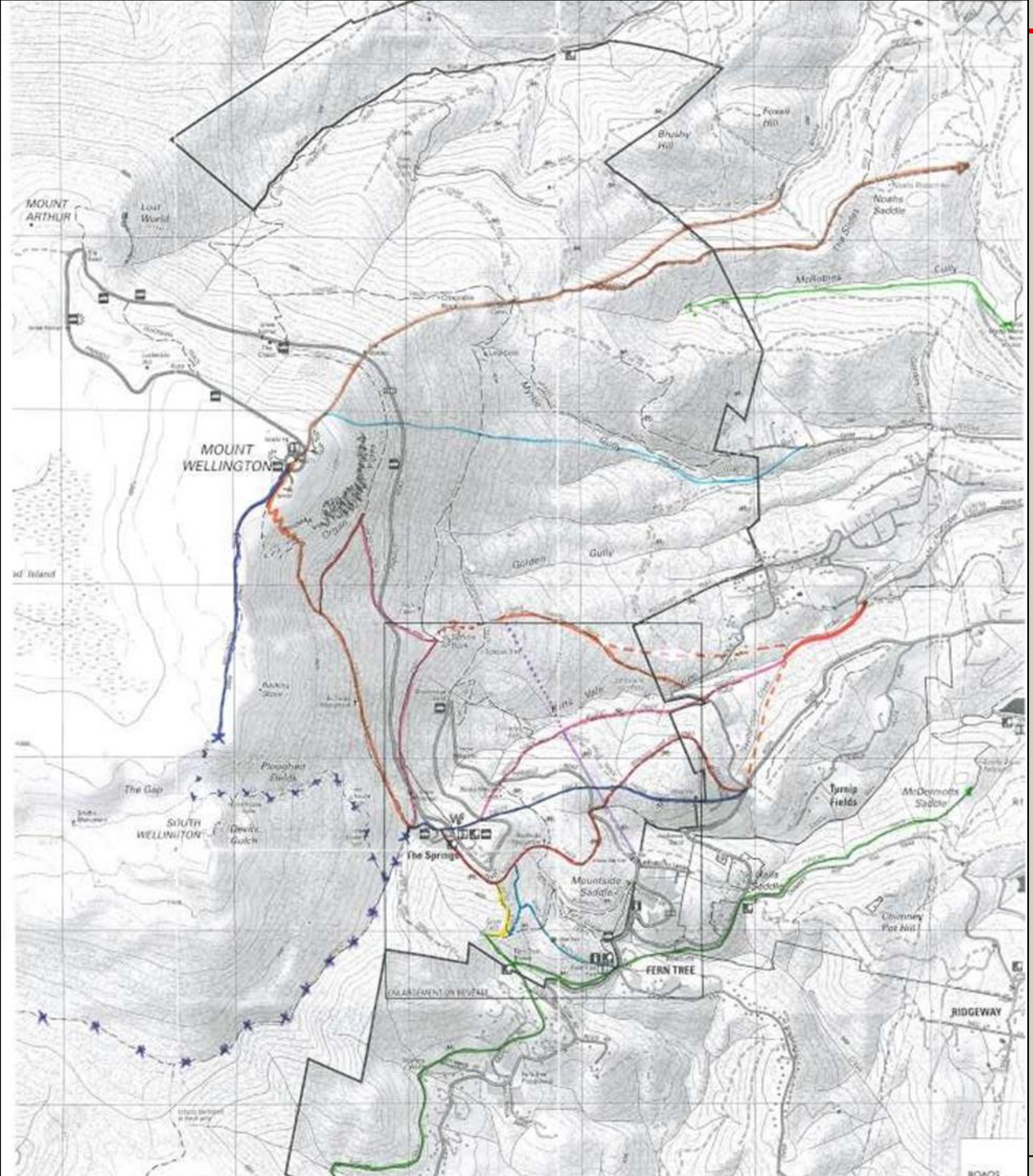


Rangers Cottage, Springs, built 1891, image c.1909, author unknown

[Source – postcard M&J Grist collection.]



1906 - 1926





Boundary Track, 1906 [Image: A. McConnell, c.2010]

*“PREPARING FOR THE NEW TOURIST SEASON
IN SOUTHERN TASMANIA
- Accommodation House at the Springs”*

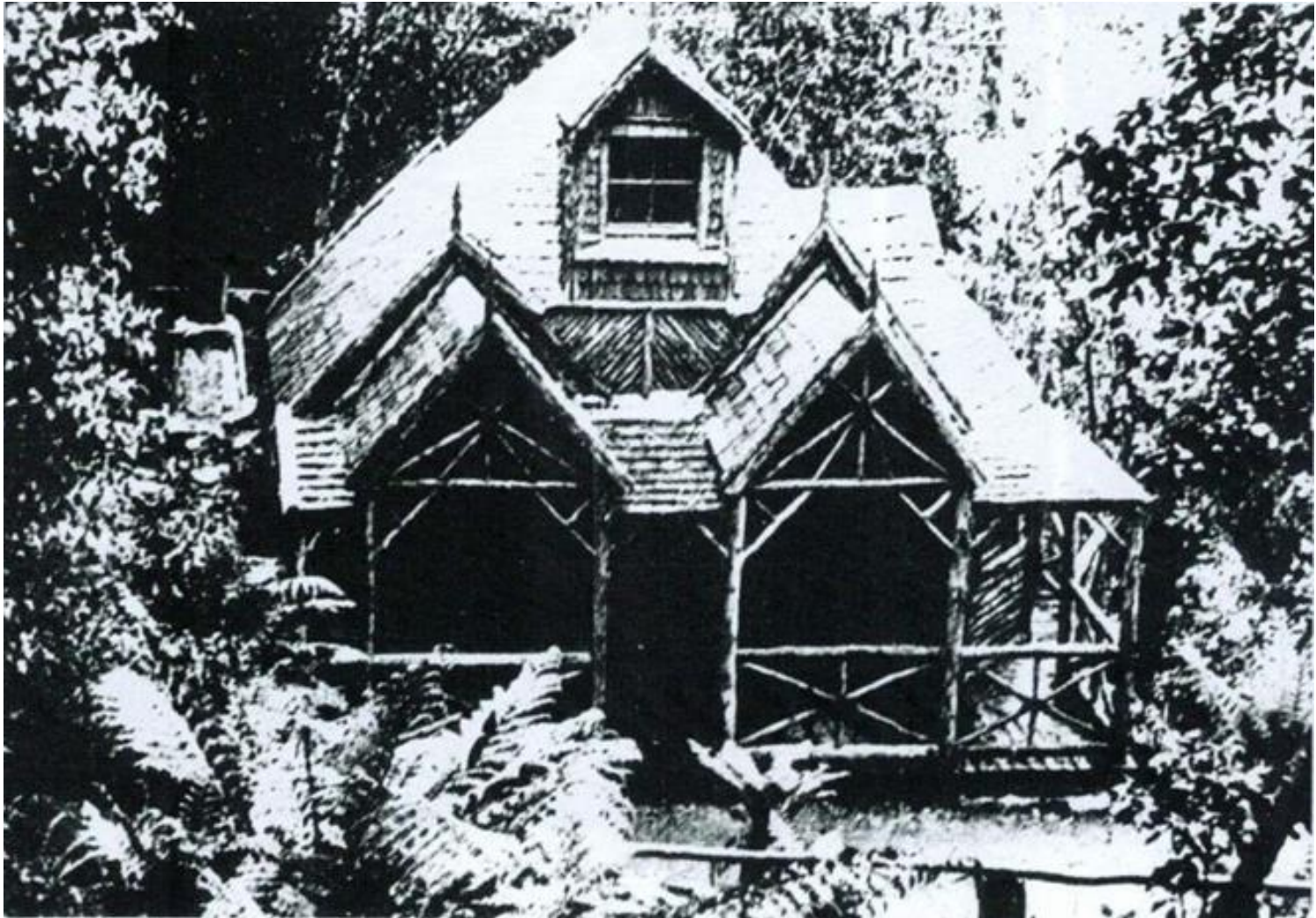
(Weekly Courier, 19 Sept 1907)



Springs Hotel ,
built 1907.

[Source - Weekly
Courier 31 Dec 1908
(provided by M&J
Grist)]

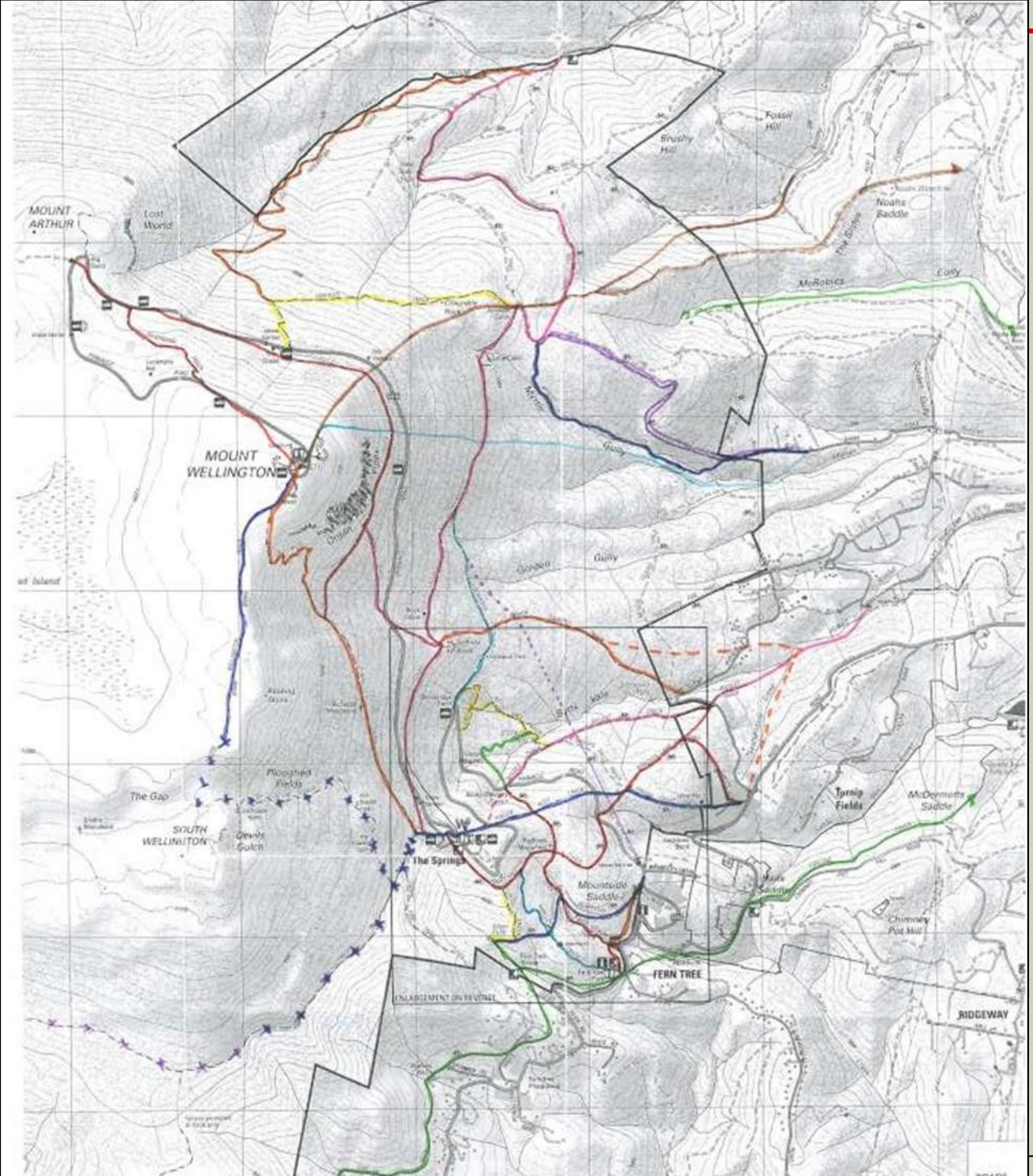




Musk Hut, built 1906-7

No date, author unknown, source – postcard (M&J Grist collection)

1927 - 1933





Mt Arthur / Organ Pipes Track (1931)



Lenah Valley Track (1930)



Shoobridge Track (1931)

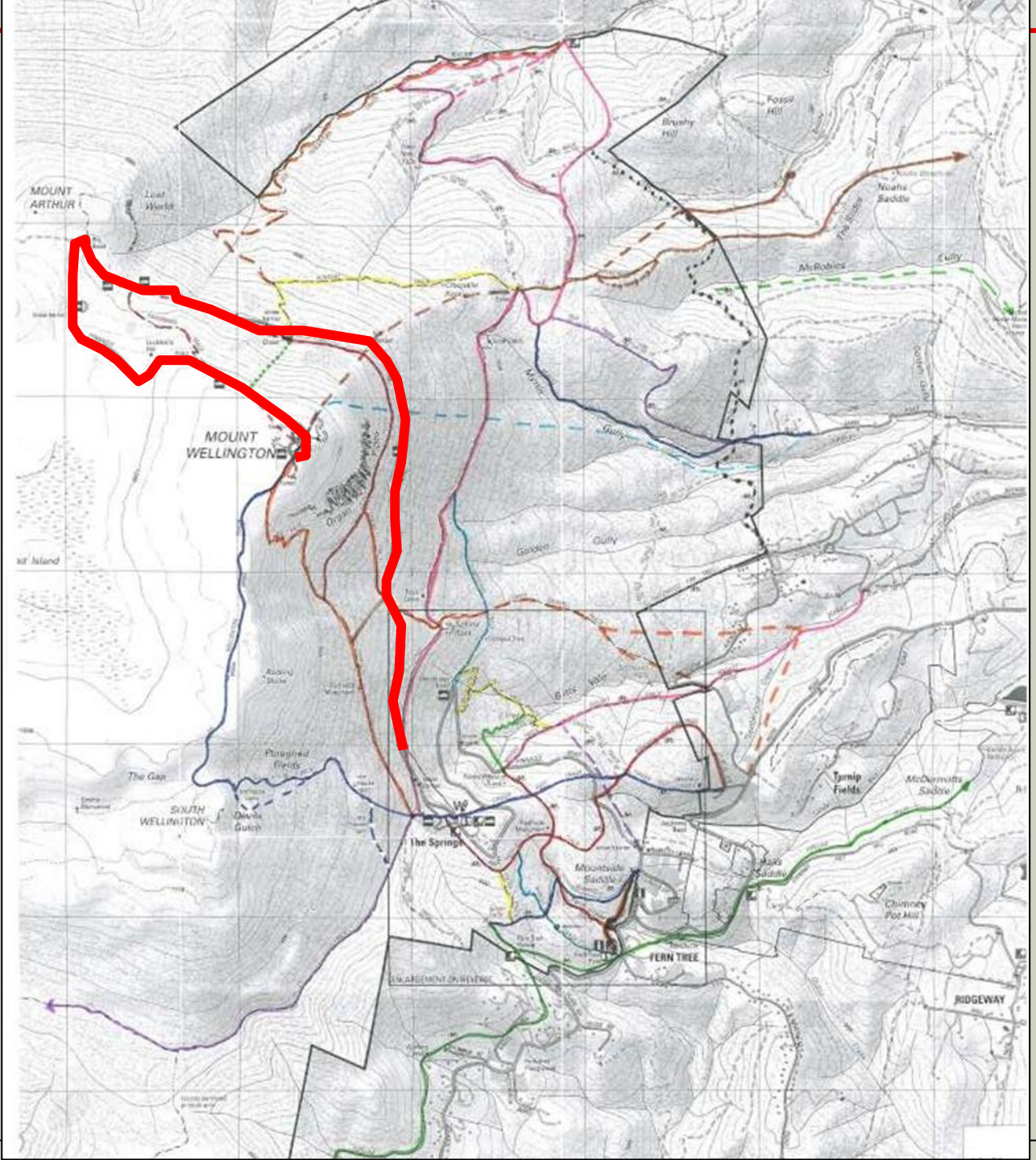


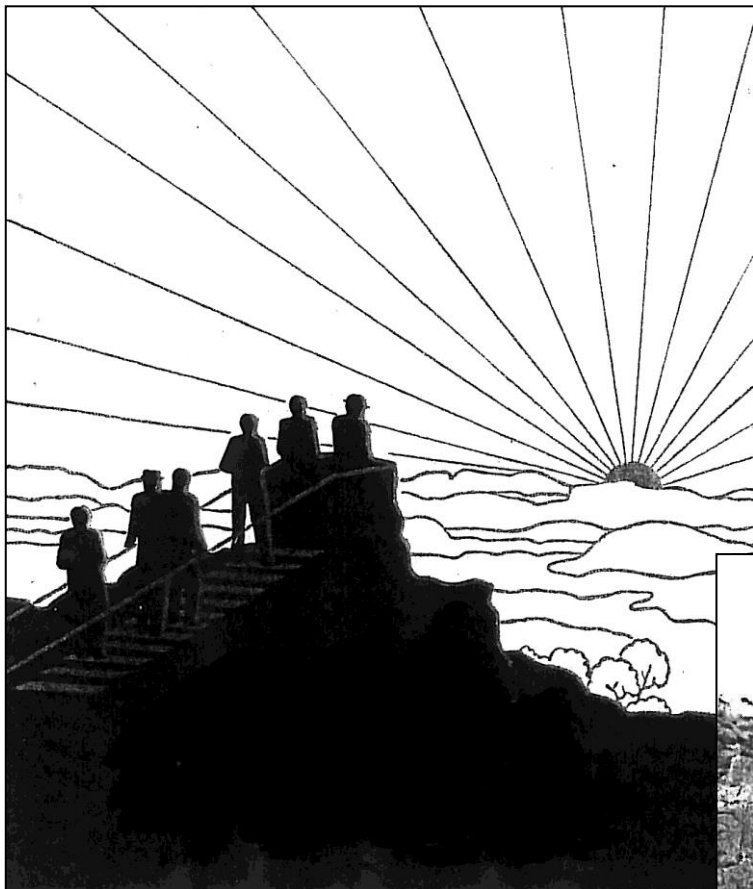
Sunday Walking Club – 1931, RC Harvey.
[Source – State Library of Tasmania]



Alan Cameron Walker Memorial Shelter, built 1932
[Source – J&M Grist private collection]

1934 - onwards



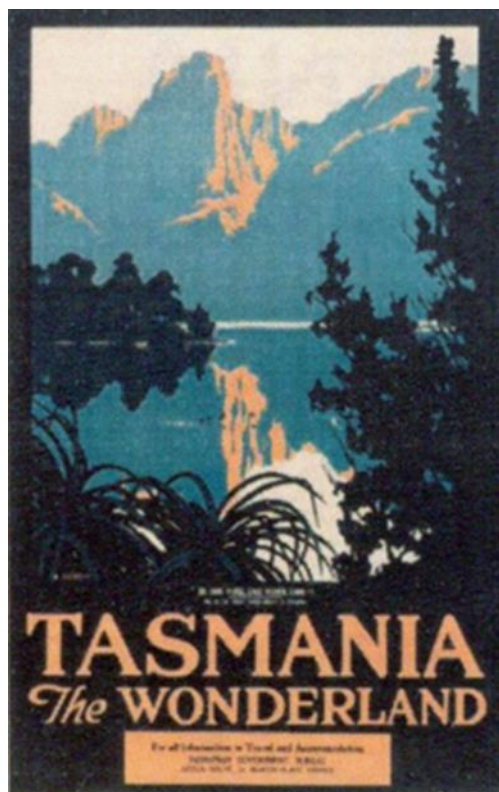


From Mt Wellington, Dawn Festival Souvenir,
29th March 1937

[Source – State Library of Tasmania]

Construction of the Pinnacle Road 1934-1936.
[Source – WPMT, Knott Collection).





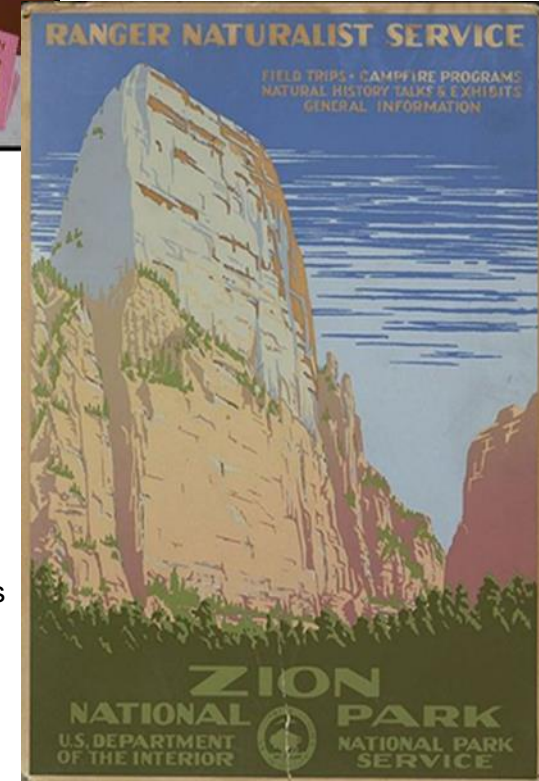
1930s, Harry Kelly.
[Source – Tasmaniana Collection, TAHO].



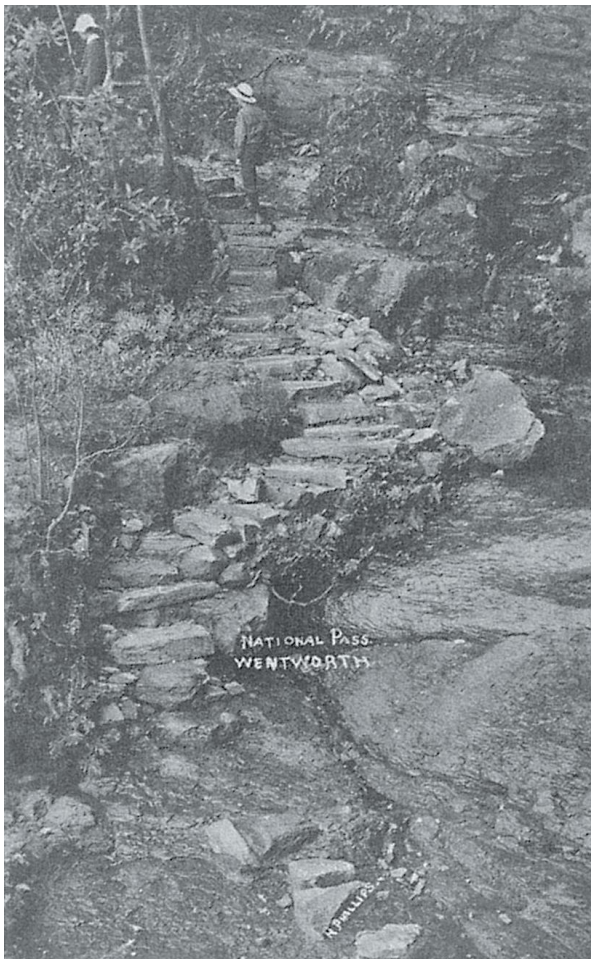
1936, Canadian Pacific Railways.
[Source – unknown].



1935, James Northfield.
[Source – National Library of Australia].



1938, US National Parks Service.
[Source – US Library of Congress Prints & Photographs Collection]



Track in the Katoomba area, Blue Mountains, c.1920s, Harry Phillips postcard

[Source – Smith et al (2006) (from the Jim Smith Collection)]



West Rim Trail, Zion National Park, Utah, USA, 1930s, Henry G. Peabody
[Source – US NPS Historic Photograph Collection]



Trail, Mt Tamalpais State Park, California, USA – CCC workers stand on recently built bridge, 1930s.
[Source – Brechin 2008]



Falconbridge, Blue Mountains (H. Parkes residence)
c.1881 [Source – Horne 2005]



Defiance Hut, Franz Joseph Glacier, NZ, built 1913,
[Source – NZ Historic Places Trust Register]



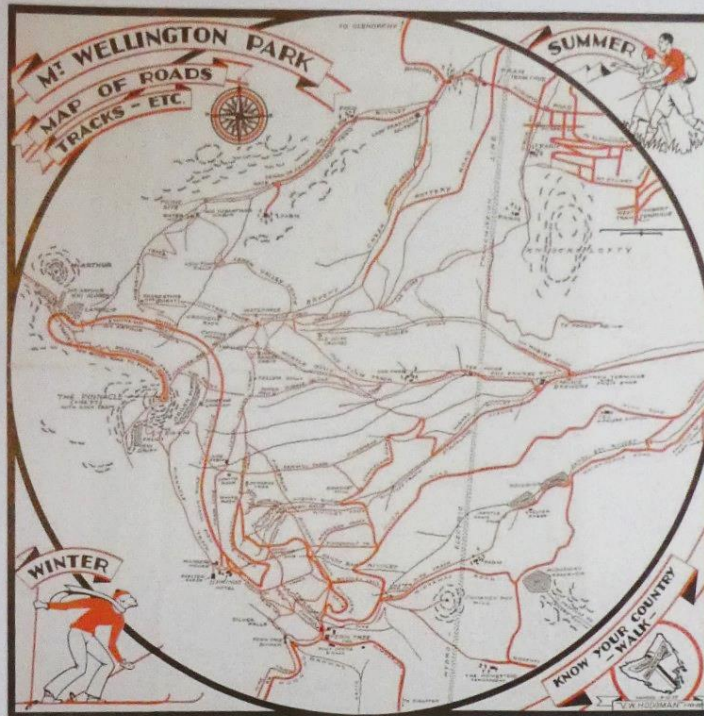
Cabin, Phantom Ranch, Grand Canyon National Park, USA,
built 1922 (Mary Jane Colter design)
[Image – A McConnell, 2018]



Picnic Shelter, Jasper National Park, BC, Canada, built 1933 by
Depression employment relief labour.
[Source – Canadian Register of Historic Places]

THE HISTORIC TRACK & HUT NETWORK
OF THE HOBART FACE OF MOUNT WELLINGTON

Interim Report
Comparative Analysis & Significance Assessment



Anne McConnell

MAY 2012

For the Wellington Park Management Trust, Hobart.

Anne D. McConnell Consultant - Cultural Heritage Management, Archaeology & Quaternary
Geoscience: GPO Box 234, Hobart, Tasmania, 7001.

THANK YOU