

# CONVICT WOMEN AT THE NEW NORFOLK ASYLUM



DR DIANNE SNOWDEN AM  
THRA  
10 AUGUST 2021

# NAME CHANGES

- **Lunatic Asylum**, New Norfolk, 1829–1859
- **Hospital for the Insane**, New Norfolk,  
1859–1915
- **Mental Diseases Hospital**, New Norfolk,  
1915–1937
- **Lachlan Park Hospital**, 1937–1968
- **Royal Derwent Hospital**, 1968–2000



**Original building  
New Norfolk Asylum**

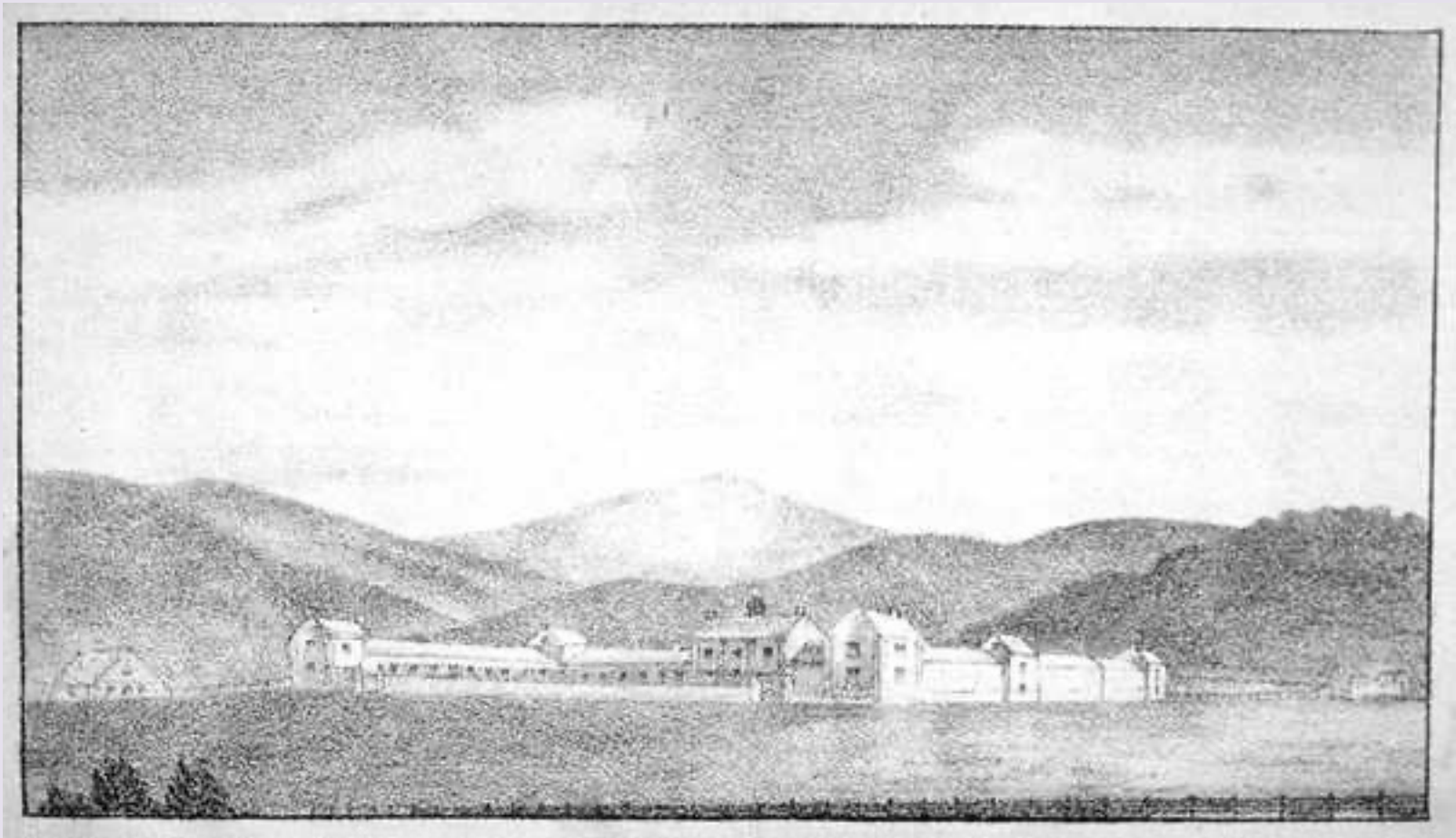




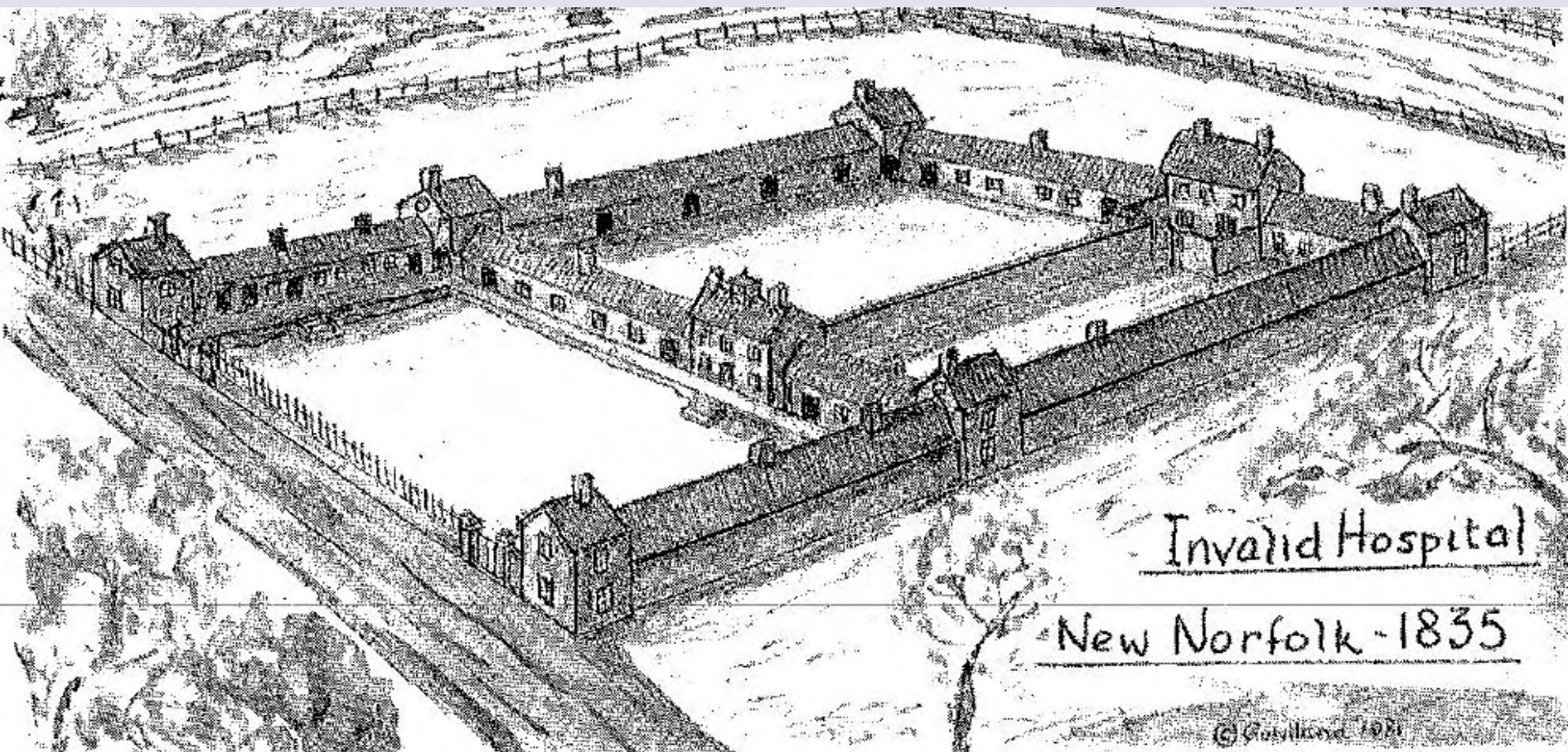
1916

"Weeping Willows" in courtyard of Mental Diseases Hospital,  
New Norfolk, grown from cuttings taken from the grave of  
Napoleon at St. Helena, and planted there by Lady Franklin  
in 1839.





**New Norfolk Invalid Hospital**



**New Norfolk Invalid Hospital**  
Willow Court History Group





HOSPITAL OF INSANE NEW NORFOLK 68

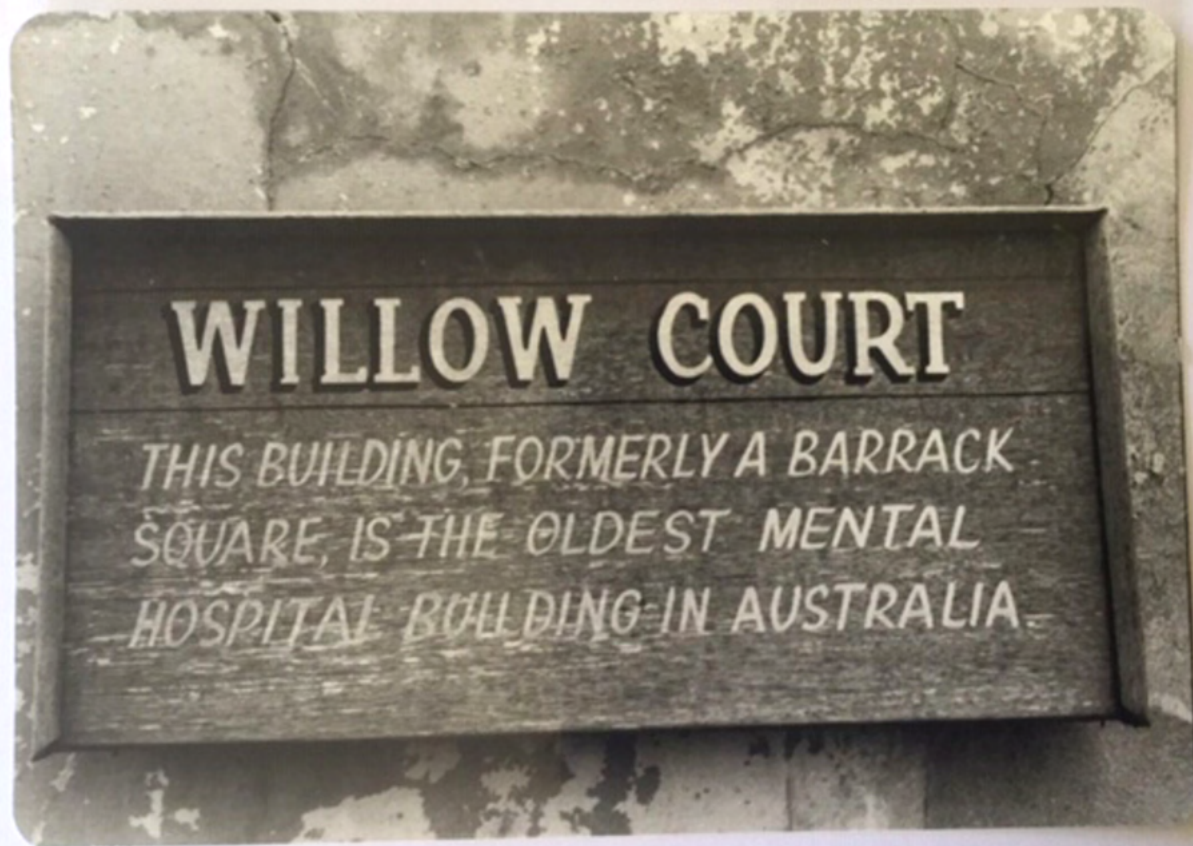
W. J. Little, Photo.

# New Norfolk Asylum



# **‘WILLOW COURT ASYLUM COMPLEX STATE HERITAGE SITE**





**WILLOW COURT  
THIS BUILDING, FORMERLY A  
BARRACK SQUARE,  
IS THE OLDEST MENTAL HOSPITAL  
BUILDING IN AUSTRALIA**



**TA, HSD247/1/1**

Date of last previous Admission, if any.	No. in Order of Ad- mission.	Date of Admission.	Christian and Surname at length.	Sex.		Condition as to Marriage.		Condition of life, and previous Occupation.	Previous Place of Abode.	By whom Authority rest.	
				M.	F.	Age.	Married Single.				Widowed.
1	1	8 <sup>th</sup> Aug 1830	Edward W. Sedith	1	28			1	Longford	St. Peter's	
2	2	18 <sup>th</sup> May 1831	William Williams	1	20				Longford	St. Peter's	
3	3	1 <sup>st</sup> June 1831	John Brown	1	27				Longford	St. Peter's	
4	4	27 <sup>th</sup> Feb 1831	John Brown	1	28				Longford	St. Peter's	
5	5	1 <sup>st</sup> May 1831	John Brown	1	28				Longford	St. Peter's	
6	6	19 <sup>th</sup> March 1831	John Brown	1	28				Longford	St. Peter's	
7	7	14 <sup>th</sup> March 1831	John Brown	1	28				Longford	St. Peter's	
8	8	1 <sup>st</sup> March 1831	John Brown	1	28				Longford	St. Peter's	
9	9	13 <sup>th</sup> April 1831	John Brown	1	28				Longford	St. Peter's	
10	10	24 <sup>th</sup> Feb 1831	John Brown	1	28				Longford	St. Peter's	
11	11	21 <sup>st</sup> May 1831	John Brown	1	28				Longford	St. Peter's	
12	12	14 <sup>th</sup> Feb 1831	John Brown	1	28				Longford	St. Peter's	
13	13	1 <sup>st</sup> Aug 1831	John Brown	1	28				Longford	St. Peter's	
14	14	27 <sup>th</sup> Nov 1831	John Brown	1	28				Longford	St. Peter's	
15	15	1 <sup>st</sup> May 1831	John Brown	1	28				Longford	St. Peter's	
16	16	1 <sup>st</sup> May 1831	John Brown	1	28				Longford	St. Peter's	
17	17	16 <sup>th</sup> March 1831	John Brown	1	28				Longford	St. Peter's	
18	18	14 <sup>th</sup> May 1831	John Brown	1	28				Longford	St. Peter's	
19	19	1 <sup>st</sup> June 1831	John Brown	1	28				Longford	St. Peter's	
20	20	1 <sup>st</sup> June 1831	John Brown	1	28				Longford	St. Peter's	
21	21	21 <sup>st</sup> Feb 1831	John Brown	1	28				Longford	St. Peter's	
22	22	1 <sup>st</sup> Feb 1831	John Brown	1	28				Longford	St. Peter's	
23	23	1 <sup>st</sup> Feb 1831	John Brown	1	28				Longford	St. Peter's	
24	24	1 <sup>st</sup> Feb 1831	John Brown	1	28				Longford	St. Peter's	
25	25	1 <sup>st</sup> Feb 1831	John Brown	1	28				Longford	St. Peter's	
26	26	1 <sup>st</sup> Feb 1831	John Brown	1	28				Longford	St. Peter's	
27	27	1 <sup>st</sup> Feb 1831	John Brown	1	28				Longford	St. Peter's	
28	28	1 <sup>st</sup> Feb 1831	John Brown	1	28				Longford	St. Peter's	
29	29	1 <sup>st</sup> Feb 1831	John Brown	1	28				Longford	St. Peter's	
30	30	1 <sup>st</sup> Feb 1831	John Brown	1	28				Longford	St. Peter's	
31	31	1 <sup>st</sup> Feb 1831	John Brown	1	28				Longford	St. Peter's	
32	32	1 <sup>st</sup> Feb 1831	John Brown	1	28				Longford	St. Peter's	
33	33	1 <sup>st</sup> Feb 1831	John Brown	1	28				Longford	St. Peter's	
34	34	1 <sup>st</sup> Feb 1831	John Brown	1	28				Longford	St. Peter's	
35	35	1 <sup>st</sup> Feb 1831	John Brown	1	28				Longford	St. Peter's	
36	36	1 <sup>st</sup> Feb 1831	John Brown	1	28				Longford	St. Peter's	
37	37	1 <sup>st</sup> Feb 1831	John Brown	1	28				Longford	St. Peter's	
38	38	1 <sup>st</sup> Feb 1831	John Brown	1	28				Longford	St. Peter's	
39	39	1 <sup>st</sup> Feb 1831	John Brown	1	28				Longford	St. Peter's	
40	40	1 <sup>st</sup> Feb 1831	John Brown	1	28				Longford	St. Peter's	
41	41	1 <sup>st</sup> Feb 1831	John Brown	1	28				Longford	St. Peter's	
42	42	1 <sup>st</sup> Feb 1831	John Brown	1	28				Longford	St. Peter's	
43	43	1 <sup>st</sup> Feb 1831	John Brown	1	28				Longford	St. Peter's	
44	44	1 <sup>st</sup> Feb 1831	John Brown	1	28				Longford	St. Peter's	
45	45	1 <sup>st</sup> Feb 1831	John Brown	1	28				Longford	St. Peter's	
46	46	1 <sup>st</sup> Feb 1831	John Brown	1	28				Longford	St. Peter's	
47	47	1 <sup>st</sup> Feb 1831	John Brown	1	28				Longford	St. Peter's	
48	48	1 <sup>st</sup> Feb 1831	John Brown	1	28				Longford	St. Peter's	
49	49	1 <sup>st</sup> Feb 1831	John Brown	1	28				Longford	St. Peter's	
50	50	1 <sup>st</sup> Feb 1831	John Brown	1	28				Longford	St. Peter's	
51	51	1 <sup>st</sup> Feb 1831	John Brown	1	28				Longford	St. Peter's	
52	52	1 <sup>st</sup> Feb 1831	John Brown	1	28				Longford	St. Peter's	
53	53	1 <sup>st</sup> Feb 1831	John Brown	1	28				Longford	St. Peter's	
54	54	1 <sup>st</sup> Feb 1831	John Brown	1	28				Longford	St. Peter's	
55	55	1 <sup>st</sup> Feb 1831	John Brown	1	28				Longford	St. Peter's	
56	56	1 <sup>st</sup> Feb 1831	John Brown	1	28				Longford	St. Peter's	
57	57	1 <sup>st</sup> Feb 1831	John Brown	1	28				Longford	St. Peter's	
58	58	1 <sup>st</sup> Feb 1831	John Brown	1	28				Longford	St. Peter's	
59	59	1 <sup>st</sup> Feb 1831	John Brown	1	28				Longford	St. Peter's	
60	60	1 <sup>st</sup> Feb 1831	John Brown	1	28				Longford	St. Peter's	
61	61	1 <sup>st</sup> Feb 1831	John Brown	1	28				Longford	St. Peter's	
62	62	1 <sup>st</sup> Feb 1831	John Brown	1	28				Longford	St. Peter's	
63	63	1 <sup>st</sup> Feb 1831	John Brown	1	28				Longford	St. Peter's	
64	64	1 <sup>st</sup> Feb 1831	John Brown	1	28				Longford	St. Peter's	
65	65	1 <sup>st</sup> Feb 1831	John Brown	1	28				Longford	St. Peter's	
66	66	1 <sup>st</sup> Feb 1831	John Brown	1	28				Longford	St. Peter's	
67	67	1 <sup>st</sup> Feb 1831	John Brown	1	28				Longford	St. Peter's	
68	68	1 <sup>st</sup> Feb 1831	John Brown	1	28				Longford	St. Peter's	
69	69	1 <sup>st</sup> Feb 1831	John Brown	1	28				Longford	St. Peter's	
70	70	1 <sup>st</sup> Feb 1831	John Brown	1	28				Longford	St. Peter's	
71	71	1 <sup>st</sup> Feb 1831	John Brown	1	28				Longford	St. Peter's	
72	72	1 <sup>st</sup> Feb 1831	John Brown	1	28				Longford	St. Peter's	
73	73	1 <sup>st</sup> Feb 1831	John Brown	1	28				Longford	St. Peter's	
74	74	1 <sup>st</sup> Feb 1831	John Brown	1	28				Longford	St. Peter's	
75	75	1 <sup>st</sup> Feb 1831	John Brown	1	28				Longford	St. Peter's	
76	76	1 <sup>st</sup> Feb 1831	John Brown	1	28				Longford	St. Peter's	
77	77	1 <sup>st</sup> Feb 1831	John Brown	1	28				Longford	St. Peter's	
78	78	1 <sup>st</sup> Feb 1831	John Brown	1	28				Longford	St. Peter's	
79	79	1 <sup>st</sup> Feb 1831	John Brown	1	28				Longford	St. Peter's	
80	80	1 <sup>st</sup> Feb 1831	John Brown	1	28				Longford	St. Peter's	
81	81	1 <sup>st</sup> Feb 1831	John Brown	1	28				Longford	St. Peter's	
82	82	1 <sup>st</sup> Feb 1831	John Brown	1	28				Longford	St. Peter's	
83	83	1 <sup>st</sup> Feb 1831	John Brown	1	28				Longford	St. Peter's	
84	84	1 <sup>st</sup> Feb 1831	John Brown	1	28				Longford	St. Peter's	
85	85	1 <sup>st</sup> Feb 1831	John Brown	1	28				Longford	St. Peter's	
86	86	1 <sup>st</sup> Feb 1831	John Brown	1	28				Longford	St. Peter's	
87	87	1 <sup>st</sup> Feb 1831	John Brown	1	28				Longford	St. Peter's	
88	88	1 <sup>st</sup> Feb 1831	John Brown	1	28				Longford	St. Peter's	
89	89	1 <sup>st</sup> Feb 1831	John Brown	1	28				Longford	St. Peter's	
90	90	1 <sup>st</sup> Feb 1831	John Brown	1	28				Longford	St. Peter's	
91	91	1 <sup>st</sup> Feb 1831	John Brown	1	28				Longford	St. Peter's	
92	92	1 <sup>st</sup> Feb 1831	John Brown	1	28				Longford	St. Peter's	
93	93	1 <sup>st</sup> Feb 1831	John Brown	1	28				Longford	St. Peter's	
94	94	1 <sup>st</sup> Feb 1831	John Brown	1	28				Longford	St. Peter's	
95	95	1 <sup>st</sup> Feb 1831	John Brown	1	28				Longford	St. Peter's	
96	96	1 <sup>st</sup> Feb 1831	John Brown	1	28				Longford	St. Peter's	
97	97	1 <sup>st</sup> Feb 1831	John Brown	1	28				Longford	St. Peter's	
98	98	1 <sup>st</sup> Feb 1831	John Brown	1	28				Longford	St. Peter's	
99	99	1 <sup>st</sup> Feb 1831	John Brown	1	28				Longford	St. Peter's	
100	100	1 <sup>st</sup> Feb 1831	John Brown	1	28				Longford	St. Peter's	

[illegible]





**Bishop  
Willson**



**Solitary Box**





FORM 1.

MEDICAL CERTIFICATE.

I, the undersigned, being a Medical Practitioner, hereby certify that I,  
on the *Twenty Ninth* day of *May* 1860

(1) In any case where more than one Medical Certificate is required by this Act, here insert "separately from any other Medical Practitioner."

personally examined

*Eliza Smith*

(2) Insert residence and profession or occupation, if any.

of (2)

*a pauper patient in the General Hospital Hobart*

and that the

said

*Eliza Smith*

(3) Or "an Idiot," or "a person of unsound mind."

is a *lunatic*, (3) *a person of sound mind* and a proper person to be taken charge of and detained under care and treatment; and that I have formed this opinion upon the following grounds; viz.—

(4) Here state the facts.

1. Facts indicating Insanity observed by myself: (4)—

*When admitted into Hospital her clothes and person were in a most filthy state, and she did not seem to be aware of the fact. She gave a most rambling incoherent account of herself. Her principal hallucination seems to be that some person, whom she styles "a cranky man" comes nightly to torment her, and the other female inmates of the Hospital, who are continually in the ward, wandering about frequently in a state of nudity. She gets excited*

**Medical Certificate  
declaring  
Eliza Smith  
Statey 1849  
to be a person  
of unsound mind  
1860**

Ellen Sullivan (2) Aged 23 Waverley (2)

Admitted 12 April

1849

Folio 53

W49  
Date: March  
DISEASE—with detailed Symptoms  
April 10 Admitted from the first Hospital where pronounced "insane" by a board of Medical Officers.  
14 months in the colony. No violence as to her state of mind or habits previous to 30 March last. She has after having been under treatment in this Hospital about 2 months for an hysterical affection, symptoms of mental disease first manifested themselves, and have continued since. Appearance & manner indicative of insanity. She sleeps very little and is extremely restless at night. labors under a variety of delusions—fancying that people are making false reports about her. Attempted suicide once and still threatens to do so. Breaks several windows—and her vision hindered restraint necessary. An Irish girl—can read and write—a married woman. Physiological development, good. Dark hair and blue eyes—her appearance is superior to the ordinary run of prisoners—can sew very well and is at times so employed—she can hardly give a connected account

Apr 54

EXAMPLE OF  
CASE NOTES  
ELLEN SULLIVAN  
(2) Waverley 1847  
Admitted 1849





**Cupping set  
for bloodletting**









St Matthew's Burial ground,  
New Norfolk



**North Circle Burial Ground**



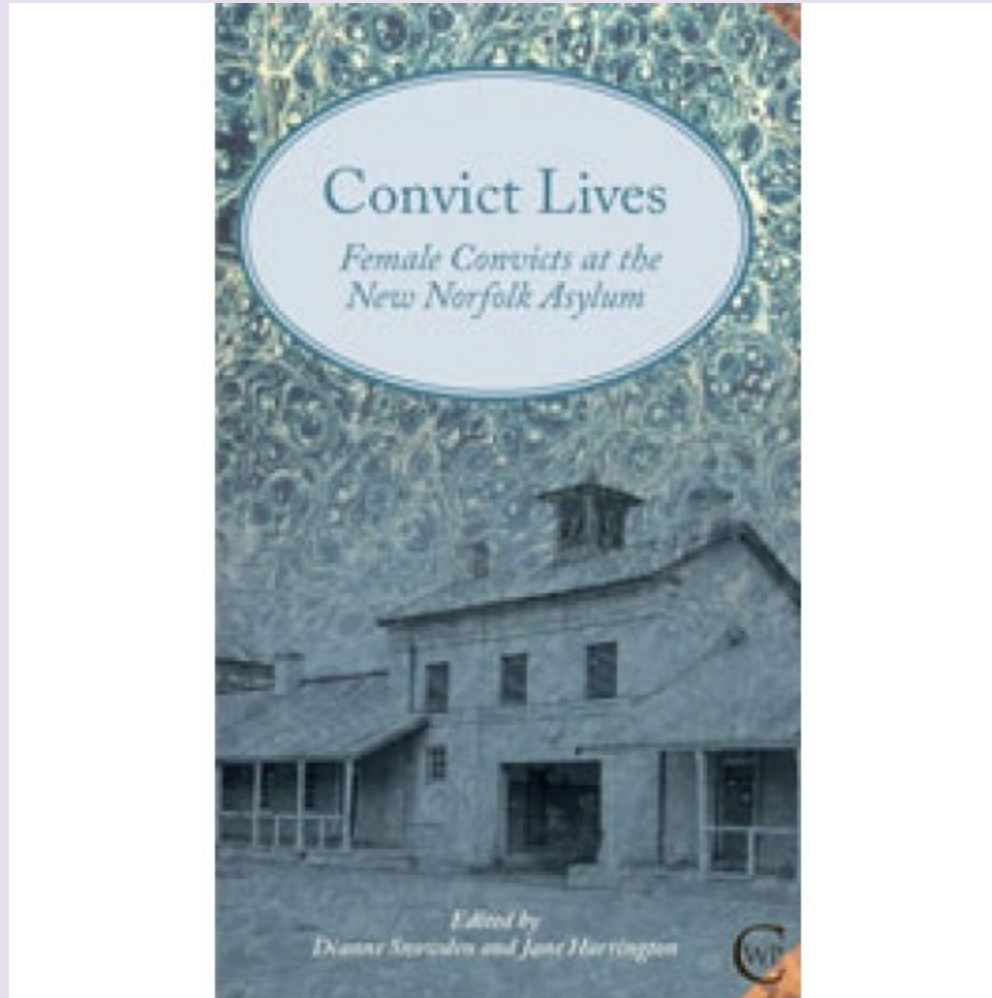


MAIN BUILDING, NEW NORFOLK ASYLUM.

**Female Building 1907**



# ***Convict Women's Press***



[www.convictwomenspress.com.au/](http://www.convictwomenspress.com.au/)

[www.femaleconvicts.org.au](http://www.femaleconvicts.org.au)





THE  
END