

History of Quaker Education

The Friends' School, Hobart







1668 First Quaker School
in England –Waltham
Essex.

Founded 1779 Ackworth
(lower image) a former
Foundling Hospital is still
a fairly large School. In
early times it included
teacher training .



James Backhouse & George Washington Walker .



- Travellers under Concern
 - The first Quaker Meeting in Australia was held in George Crouches home Bathurst Street
- 2 September, 1833

The first Quaker Meeting House in Hobart.

- A cottage at 39 Murray Street was purchased, in 1837 by James Backhouse
- Funds loaned by London Meeting for Sufferings were used in purchase.
- A second Meeting House was built on the site (now the RACT)



As the need for a local School for Quaker children became pressing.

Thomas Mason ran a school for children of Quaker families 1847-1851

Sarah Bell attempted to run a school in the Meeting House 1853-1854

Margaret Beale ran a school in the Meeting House 1855-1857

Margaret Beale (née Grubb) taught adolescent women on subjects such as “English, French, Latin, drawing, and needlework.” Beale also accepted a few select male students.

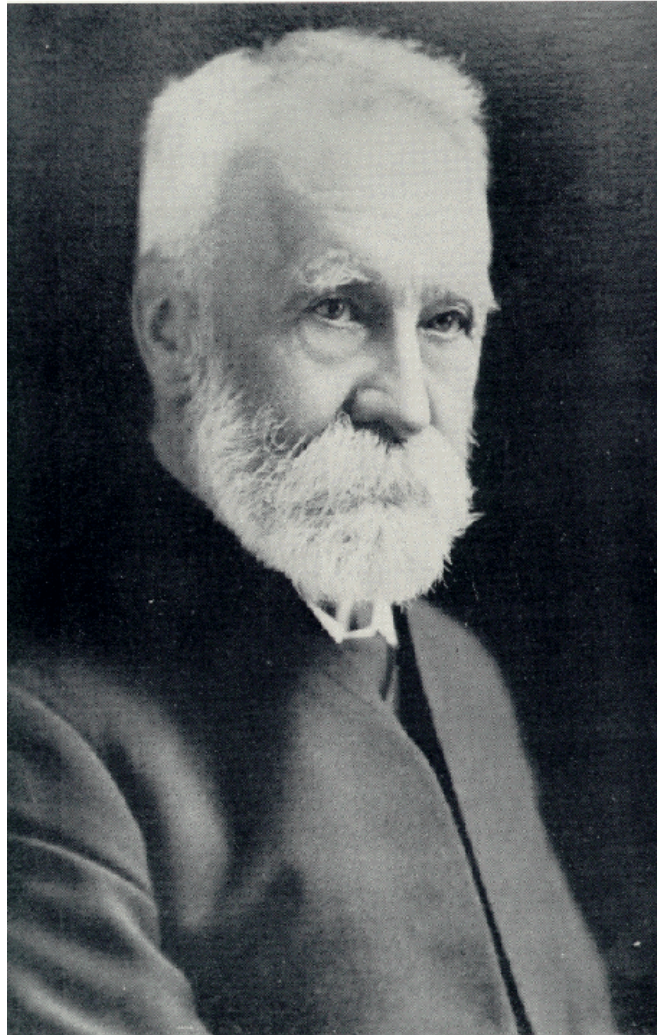
Frederick & Rachel Mackie established a school in Bathurst Street 1857-1861

Lydia Wood, ran a school in Liverpool Street unsupported by Friends 1861-1862?

1869 Melbourne Monthly Meeting began correspondence with London concerning establishment of school for children of Friends.

1885 Friends’ in Hobart appointed Committee to investigate possibility of establishing a school .

J Francis
Mather



**J. FRANCIS MATHER,
Secretary of the Friends'
School Committee, 1887-1890.
Chairman, 1890-1923.**

A
Headmaster
chosen

**SAMUEL CLEMES,
The First Headmaster,
1887 - 1900**

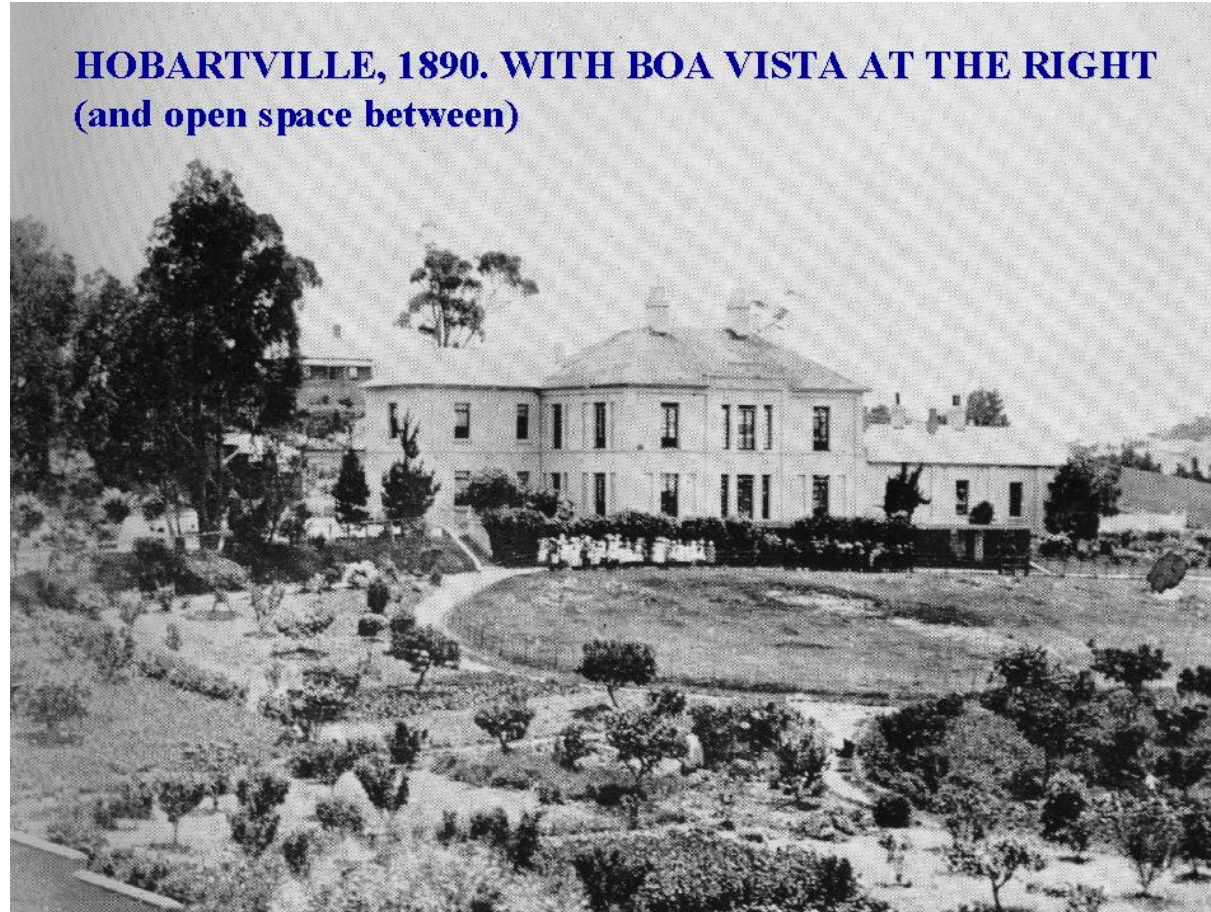


A site for
teaching
and living



**THIS IS WHERE FRIENDS' SCHOOL BEGAN IN 1887
No's. 60-62 Warick Street as it appears today.**

The School grew quickly , soon student numbers were too large for the Warwick Street premises.
Hobartville was selected as a good school site. The Baptist Union helped finance the purchase .

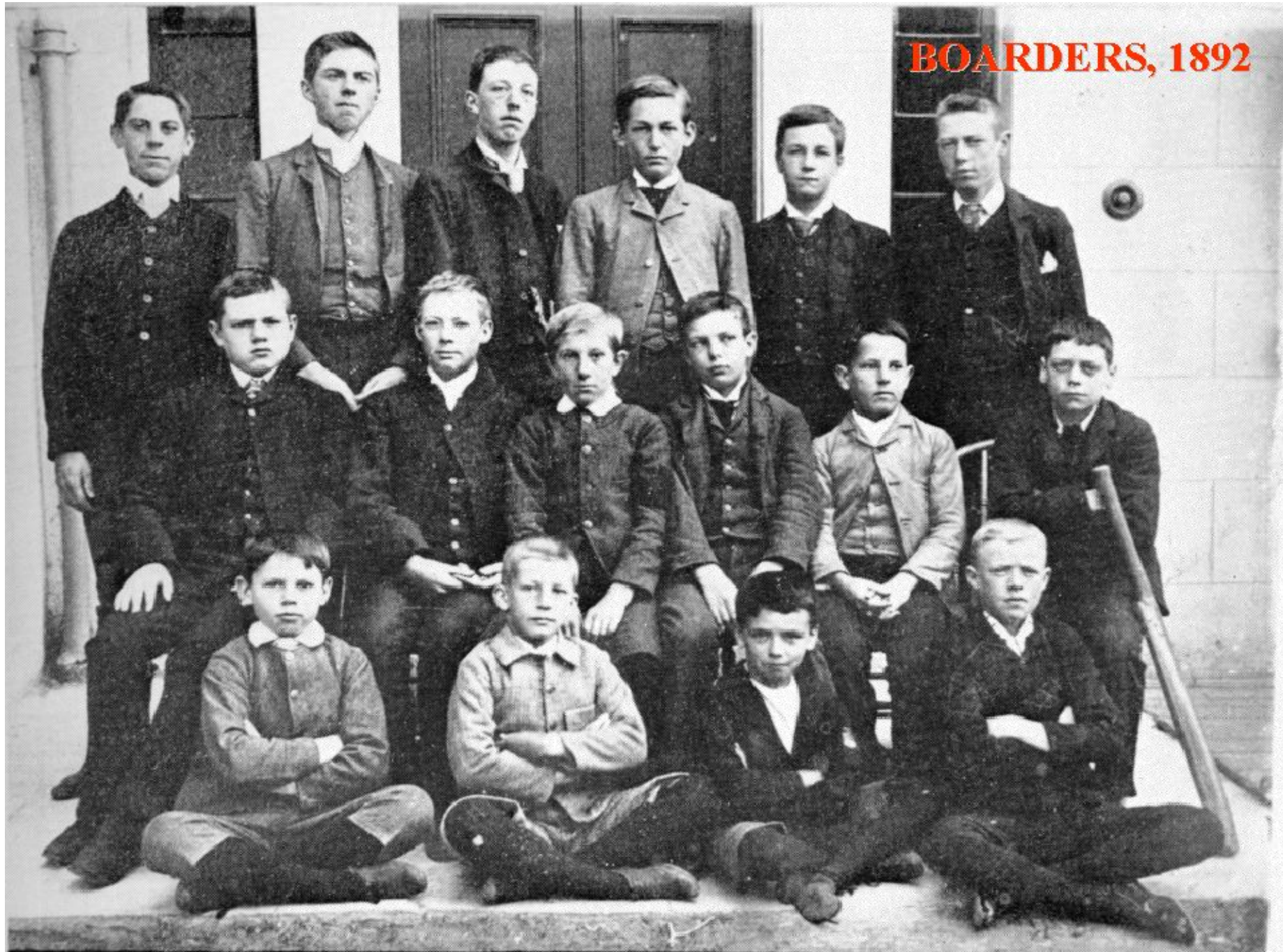








BOARDERS, 1892

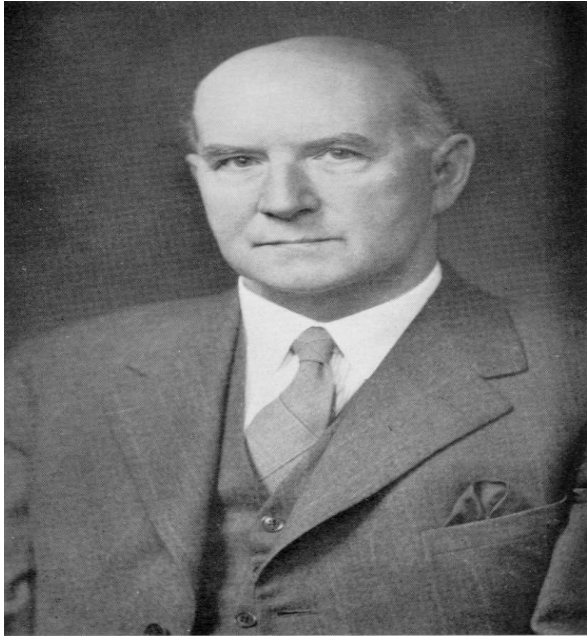


CHAMPIONS OF TASMANIA 1911



BACK ROW: (L TO R) - R. SNELL, A. BUCHANAN, J. PRINGLE, V. CRISP, R. REID.
SECOND ROW: MR. B. CARTER (COACH), F. SCHOLLS, E. LINES, MR. E. I. GOWER (PRINCIPAL), W. DUNRABIN,
A. CLERKE, MR. E. J. LEWIS (SPORTS MASTER).
THIRD ROW: T. PROPSTING, E. PIESSE (VICE-CAPT.), K. GODDARD (CAPT.), G. GODDARD, B. HOWELL.
FRONT ROW: D. CRISP, MR. J. GARDINER (UMPIRE), F. PRINGLE.

Following Clemes resignation from The Friends High School and his establishment of Lesley House School , London Yearly Meeting confirmed Acting Headmaster Edmund Gower 1901-1903, 1908-1916

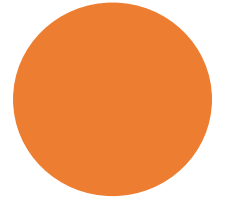


**J. EDGAR SMITH, B.Sc.,
Headmaster, 1903-1907.**

Ernest E Unwin

Headmaster 1923-1944

- Teacher , Scientist and Artist
- Introduced School uniform, School badge and new subjects e g art.
- Instigated a big building program partly supported by Cadburys.
- Management of the Hobart School transferred to Australian Quakers 1922



- The whole school in 1928 outside new buildings in the newly introduced uniforms.





**CHARLES ANNELLS, M.A.,
1900-1907, 1913-1948,
Headmaster, 1916-1923.**

**STUART L. HICKMAN,
B.A., Dip.Ed., M.A.C.E.,
Acting Headmaster,
Sept., 1944 - May, 1945.**



Faithful Servants

- Leaders through difficult times

William Oats
1945-1974
First Australian
born
Headmaster-
supported
international
perspective,
new subjects,
clubs and co
curricular
activities.



The Clemes Family gave so much to The Friends School right from the 1887

Clemes and Friends merged in 1946 and the Clemes College buildings became part of the Friends School stock .

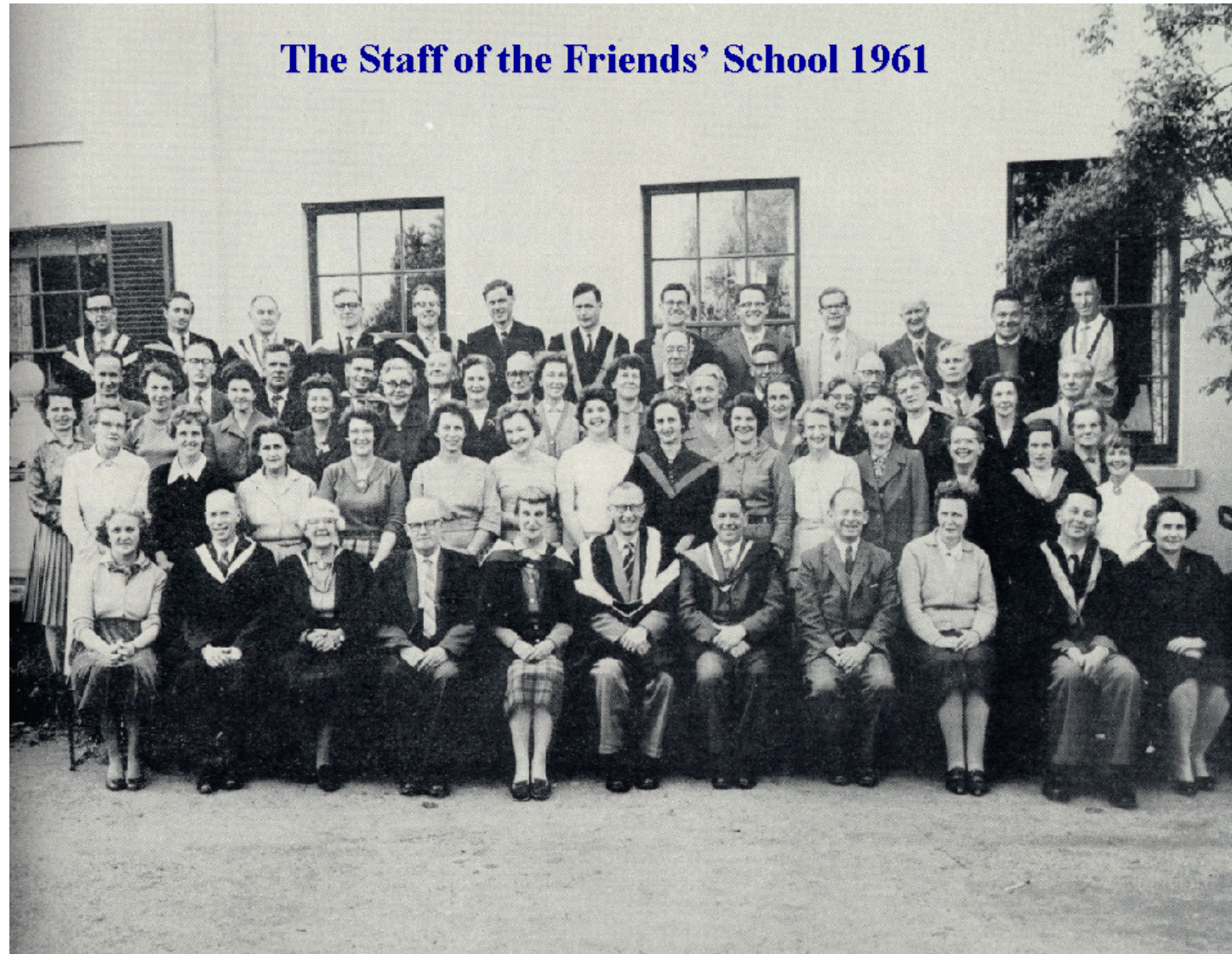
WILL AND GERTRUDE CLEMES, 1945.



A School on two sites, Argyle Street and Commercial Road.
Bill Oats skillfully leading with faith and talent, idealism and energy.



Enrolments grew, staff grew





PREFECTS, 1961



THE SPORTS COMMITTEE, 1961



First Eight, 1968

Buildings changed their use



- The original Hobartville building has many additions built for the School administration and Secondary School students
- The Boa Vista House building was demolished in the late 1960s and the campus there now houses buildings for Morris (Primary School) and the Middle School)

Co-Principals Lindsay Farrall and Stephanie Farrall followed the shared Principalship of Michael and Margaret Bailey.

During the Farrall years the school enrolment rose to over 1000. An Early Years program developed including Child Care and outside school hours care , computers as learning enablers were introduced, boarding was reintroduced , a new uniform and increases in international perspectives including four languages. Health and Fitness Centre built. Importantly the international Baccalaureate was introduced in Primary and in Senior Secondary of School .





John Green, an English Quaker who had migrated to Australia after teaching in England and Asia became Principal mid 2002 and served for a decade.

Following British and Australian Quaker Headmasters and Principals , Nelson File, an American Quaker who had taught internationally , became Principal in 2013.He is pictured center below with members of the Friends' School Board of Management.





Esther Hill became the first female Principal in 2024. She came as an innovative teacher from Western Australia and traces her families Quaker roots back to nineteenth century Northern England.